



**KIDS  
COUNT**



**25<sup>TH</sup>**  
**EDITION**

**2014**

**DATA BOOK**

state trends in child well-being

THE ANNIE E. CASEY FOUNDATION





**KIDS  
COUNT**



**25<sup>TH</sup>**  
EDITION

**2014**

**DATA BOOK**

state trends in child well-being

# ACKNOWLEDGMENTS

The Annie E. Casey Foundation's *KIDS COUNT Data Book* could not be produced and distributed without the help of numerous people. The publication was assembled and produced under the general direction of Laura Speer and Florencia Gutierrez. Other Casey staff who contributed to this report include Sue Lin Chong, Ryan Fox, Lisa Hamilton, John Hodgins, Michael Laracy and Norris West. Nancy Cauthen provided writing and research support.

The following national experts provided valuable insight and perspectives on the long-term trends affecting child well-being: Olivia Golden, Ron Haskins, Sara McLanahan, Margaret Simms and Jane Waldfogel. We are grateful they took the time to speak with us.

The Population Reference Bureau was instrumental in the development of the KIDS COUNT index and in the collection and organization of data presented in this book. We are especially grateful to Rachel Cortes, Jean D'Amico and Kelvin Pollard.

Special thanks are also due the staff at KINETIK, for design and production

services; the staff at Hager Sharp, for helping to promote the *Data Book*; and Jayson Hait of eye4detail, for proofreading and copyediting.

Finally, we would like to thank the state KIDS COUNT projects (see page 54), for making the *Data Book* available to national, state and local leaders across the country. Permission to copy, disseminate or otherwise use information from this *Data Book* is granted as long as appropriate acknowledgment is given.

## Outreach Partners

The Annie E. Casey Foundation wishes to thank our outreach partners for their support and assistance in promoting and disseminating the 2014 *KIDS COUNT Data Book*. With the help of our partners, data on the status and well-being of kids and families are shared with policymakers, advocates, practitioners and citizens to help enrich local, state and national discussions on ways to improve outcomes for America's most vulnerable children.

---

The 2014 *KIDS COUNT Data Book* can be viewed, downloaded or ordered on the Internet at:

[www.aecf.org/2014db](http://www.aecf.org/2014db)

---

To learn more about the Annie E. Casey Foundation's 2014 KIDS COUNT Outreach Partners, please visit:

[www.aecf.org/outreachpartners](http://www.aecf.org/outreachpartners)

# CONTENTS

|    |   |
|----|---|
| 4  | <b>FOREWORD</b>                                       |
| 15 | <b>TRENDS</b>   |
| 20 | Overall Child Well-Being                              |
| 22 | Economic Well-Being                                   |
| 26 | Education   |
| 30 | Health  |
| 34 | Family and Community                                  |
| 39 | <b>CONCLUSION</b>                                     |
| 42 | <b>KIDS COUNT DATA CENTER</b>                         |
| 44 | <b>APPENDICES</b>                                     |
| 50 | About the Index                                       |
| 51 | Definitions and<br>Data Sources                       |
| 54 | Primary Contacts for<br>State KIDS COUNT Projects     |
| 57 | About the Annie E. Casey<br>Foundation and KIDS COUNT |

# FOREWORD



# 2014 KIDS COUNT DATA BOOK



As a nation, we are obsessed with data and indicators when it comes to the economy. We track the gross domestic product, the Consumer Price Index, unemployment, inventories, housing starts, interest rates and so on. We monitor these numbers because they are critical to understanding where our economy is heading, and because we want to be able to respond forcefully if the numbers signal developing problems. We should be equally, if not more, concerned about the data that tell us how our children are doing: The well-being of our country's children is the most important indicator of our long-term economic and social future.



Although all too easy to downplay, ignore or deny in the short term, the data and trends bearing on child development and children's access to opportunity should command at least the same level of attention as statistics about our economy.

Each year since 1990, the Annie E. Casey Foundation has published the *KIDS COUNT Data Book* to track the well-being of children nationally and in every state. When we launched the first *Data Book* 25 years ago, we hoped that it would raise public awareness and build public commitment to invest in solutions to ensure that each and every child has the opportunity to thrive and to reach his or her full potential. In partnership with a network of state and national advocates for children, we wanted to help local communities, states and national leaders make better informed policy and practice decisions to improve the economic, health, educational, family and community well-being of America's children.

During the course of these 25 years, the Casey Foundation has used the *KIDS COUNT Data Book* to raise awareness locally and nationally about how kids are doing and what policies and programs might lead to improvements. Over that time, advocates for children have emerged in every state — as well as the District of Columbia, Puerto Rico and the U.S. Virgin Islands — to join the KIDS COUNT network. Every year, KIDS COUNT leaders use both state-based and national data on child well-being to focus journalists and

policymakers on the most challenging issues facing children in their states and communities.

Research tells us that the best predictors of success for children are a healthy start at birth and healthy development in the early years; being raised by two married parents; having adequate family income; doing well in school, graduating high school and completing postsecondary education or training; and young people avoiding teen pregnancy and substance abuse, staying out of trouble and becoming connected to work and opportunity.

In our quest to improve outcomes for our nation's children, we have used the *Data Book* to highlight these critical building blocks of healthy child development. We have placed special emphasis on:

- the importance of child well-being to our nation's future prosperity, global competitiveness and community strength;
- the variability in child well-being by income, race, ethnicity and geography; and
- evidence-based policies, programs and practices that work.

In the following sections, we take a look at the demographic, social and economic context for changes affecting children as well as major trends in child well-being since 1990 in each of the four domains covered by the KIDS COUNT index: (1) Economic Well-Being, (2) Education, (3) Health and (4) Family and Community. We also identify key policies that have contributed to



During the past quarter century, numerous demographic, social and economic changes as well as major policy developments have affected the life chances of low-income children.

improvements in child well-being as well as daunting challenges that remain.

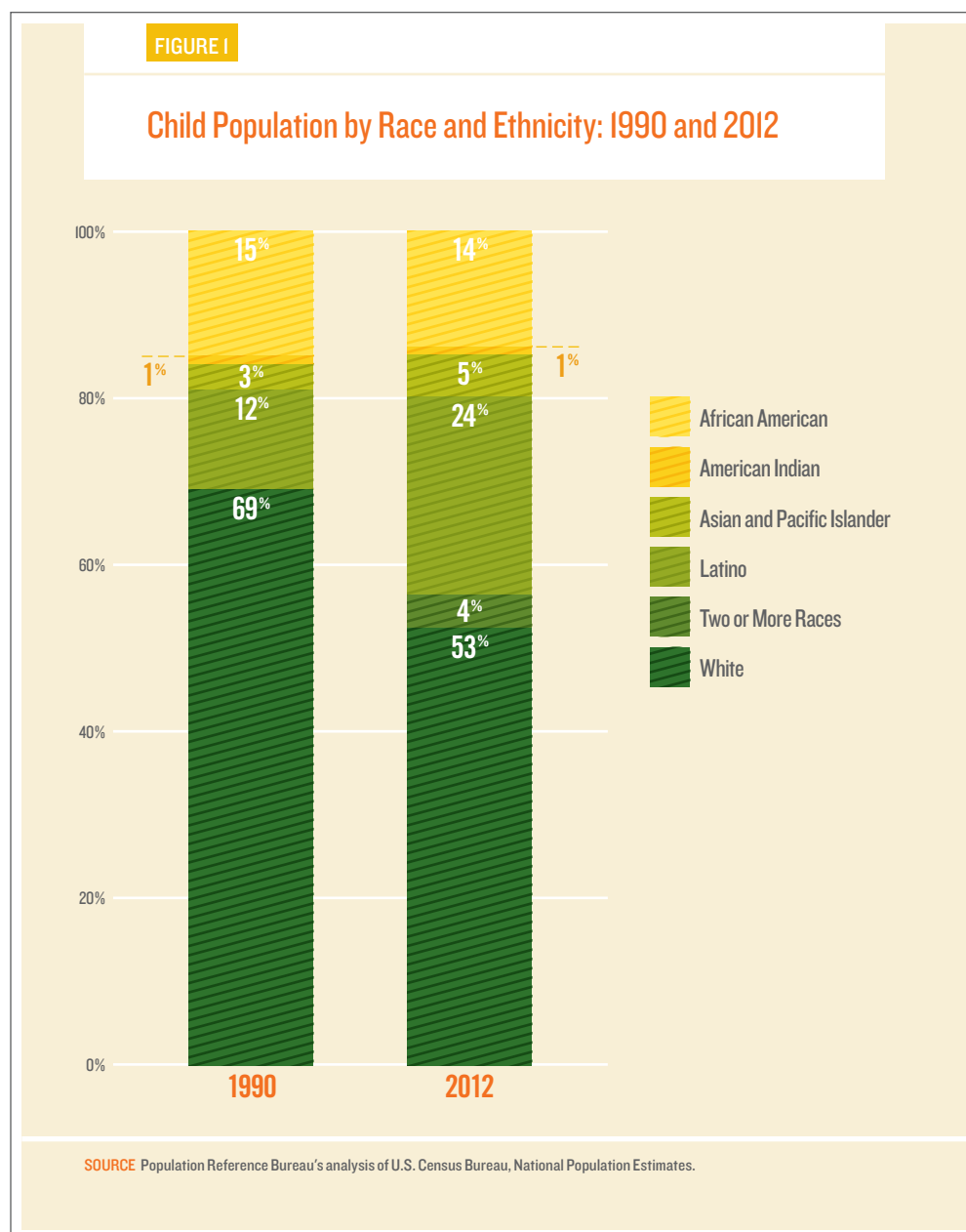
### The Context for 25 Years of Change in Child Well-Being

During the past quarter century, numerous demographic, social and economic changes as well as major policy developments have affected the life chances of low-income children. Some have been positive; some, negative; and some, decidedly complex and ambiguous.

Between 1990 and 2012, the nation's child population grew from 64 million to 74 million.<sup>1</sup> During that period, there was a fundamental shift in the racial and ethnic composition of children as a group. The percentage of white children declined from 69 percent to 53 percent, while the percentage of Latino children doubled, from 12 to 24 percent. The portion of Asian American children increased from 3 to 5 percent. The proportions of black and American Indian children stayed roughly the same (see Figure 1).

In recent years, children of color have represented nearly half of babies born in the United States. By 2018, children of color will represent a majority of children, and by 2030, the majority of workers will be people of color. By the middle of the 21st century, no single racial group will comprise a majority of the population.<sup>2</sup>

Not only have the demographics of the nation's children changed, but where they live has changed as well. The child population has grown substantially across the southern United States and the



**Advances in medicine and public health, along with rising public health insurance coverage for children and increased safety regulations, have greatly reduced child mortality rates and improved child health.**

Rocky Mountain states. Between 2000 and 2010, Texas, North Carolina and Georgia experienced some of the largest proportional gains in their child populations as did Nevada, Utah and Colorado.<sup>3</sup> Some of this growth was due to immigration, and some resulted from migration within the country.

In contrast, the child population in the New England states and the Midwest declined: Vermont, Rhode Island and Michigan saw the largest decreases from 2000 to 2010.<sup>4</sup> While state policies have always played a critical role in child well-being, particularly education and social welfare policies, shifts in where children live place additional importance on the next generation of state-level child and family policies.

Enormous changes in the economy, gender roles and families — all of which began in the decades prior to 1990 — continued to take shape during the past 25 years. More mothers with young children are in the labor force. In 2013, 64 percent of mothers with children under the age of 6 were employed, compared with 58 percent in 1990,<sup>5</sup> but the change was driven almost exclusively by the employment patterns of single mothers. From 1994 to 2010, the employment rate of married mothers with young children stayed relatively constant at about 60 percent. In contrast, 49 percent of single mothers with children under 6 years old were employed in 1994; by 2000, that figure had jumped to a peak of 69 percent, before gradually declining to 60 percent in 2010.<sup>6</sup> The labor force

participation rates of single mothers without a college degree are particularly sensitive to changes in the business cycle.<sup>7</sup>

As women have increased their participation in the labor market, men without a college degree have lost ground economically. Well-paying, unionized blue-collar jobs have continued to disappear, and new job growth has been concentrated in the low-wage service sector and at the high end where jobs typically require a bachelor's, or even a graduate, degree.

A related and equally profound change for children is the growth in nonmarital births. In 2012, 41 percent of babies were born to unmarried mothers, compared with 32 percent in 1995. The steepest increase occurred between 1980 and 1995, when the percentage of nonmarital births jumped from 18 to 32 percent. After reaching 41 percent in 2008, the rate has since been stable.<sup>8</sup> Part of the long-term increase in nonmarital births is due to the rising number of cohabiting couples and births within such relationships. However, cohabiting parents are less likely to stay together than married parents.<sup>9</sup>

The relationship between unmarried parenthood and poverty is complex. Although being a single parent increases the likelihood that a family will struggle financially, it is also true that poverty increases the chances that babies will be born to unmarried mothers. When men have poor employment prospects, they and their partners are less likely to marry. Economic hardship and uncertainty can create stress and conflict between parents and make relationships less stable.

Researchers at the Urban Institute have shown that changes in child poverty in the two decades prior to 1993 were largely the result of changes in family structure. But they also found that since 1993, changes in work have been the most important factor accounting for variation in child poverty rates.<sup>10</sup> Declining economic opportunity for parents without a college degree in the context of growing inequality has meant that children's life chances are increasingly constrained by the socioeconomic status of their parents.

In addition to large-scale social and economic changes, new policies have affected children's well-being. As we discuss in greater detail below, anti-poverty policies have improved the economic well-being of children and families, but their effects have been limited by the weak economy, and significant economic hardship remains.

Advances in medicine and public health, along with rising public health insurance coverage for children and increased safety regulations, have greatly reduced child mortality rates and improved child health. With regard to educational achievement, children at all income levels and of all races have made modest but steady improvements. Since 2001, there has been a dramatic increase in federal involvement in education policy, although the effects of these changes are still being debated.

Although not tracked by the KIDS COUNT index, another positive development is that the likelihood that a family would become involved in the child

welfare system peaked in the late 1990s and has since declined.<sup>11</sup> Children involved in foster care today are substantially more likely to be placed with families, often their own kin, than children two decades ago, but there are still far too many children without a permanent family connection.<sup>12</sup>

During the past 20 years, the country's approach to dealing with young people who get in trouble with the law has changed dramatically. Although we still imprison far more young people than other economically advanced countries, the incarceration rate among youth has decreased by 45 percent.<sup>13</sup> Juvenile crime rates have also declined. These recent trends provide a unique opportunity to implement responses to delinquency that are more cost-effective and humane and that provide better outcomes for youth, their families and communities.

### National Trends in Child Well-Being Since 1990

---

We now turn to each of the four domains of child well-being that make up the KIDS COUNT index — (1) Economic Well-Being, (2) Education, (3) Health and (4) Family and Community — and look at trends over the past 25 years.

#### Economic Well-Being

In the late 1990s, a booming economy and a series of policy changes led to increased employment among low-income single mothers and notable declines in child poverty, especially for African-American





and Latino children.<sup>14</sup> In 1996, Temporary Assistance for Needy Families (TANF) replaced the Aid to Families with Dependent Children program. TANF prioritized employment and placed time limits on the receipt of cash assistance. This shift in cash assistance was accompanied by an expansion of policies designed to “make work pay” — the Earned Income Tax Credit (EITC), child care subsidies, food stamps and health insurance for children. Together, these policies supplemented low wages and reduced work expenses, contributing to the decline in child poverty.

However, these gains began to unravel in the early 2000s because of a lackluster economy. After the recession hit in late 2007, unemployment soared and child poverty increased. The stimulus package expanded EITC benefits and the additional Child Tax Credit for low-income families and temporarily increased access to food stamps, tempering the worst effects of the recession for children. But the child poverty rate continued to increase after the recession ended.

From 1990 to 2000, the official child poverty rate dropped from 21 to 16 percent. By 2010, it had reached 22 percent and has remained roughly at that level.<sup>15</sup> However, the official poverty measure does not account for policy efforts designed to lift families out of poverty, such as tax credits, food assistance and subsidies for child care and housing. The Supplemental Poverty Measure (SPM), which provides a fuller and more accurate measure of family resources, paints a

different picture. It shows a much higher national child poverty rate 20 years ago, reaching 29 percent in 1993, but then shows a fairly steady decline to 17 percent by 2009 (see Figure 2).<sup>16</sup>

These figures illustrate that federal and state anti-poverty efforts can — and are — making a substantial difference in the lives of low-income children and families. However, the uptick in child poverty to 19 percent between 2009 and 2012, even taking benefits into account, reflects the weak labor market for workers without a college degree, particularly those lacking a high school diploma. Although unemployment is slowly declining, job growth has been concentrated in low-wage sectors and in nonstandard employment that tends to be less stable and offer few or no benefits, such as health insurance and paid sick leave. A stronger labor market and an increase in job quality, along with continued efforts to boost the education and training levels of low-income parents, would help to further reduce child poverty.

## Education

In the area of education, the years since 1990 have brought steady, incremental success. The widespread dissemination of research findings about the importance of early brain development set the stage for federal and state policy efforts to expand access to early childhood programs, which can help improve school readiness among low-income children.

In 1994, the federal government created Early Head Start, an early childhood program that provides comprehensive

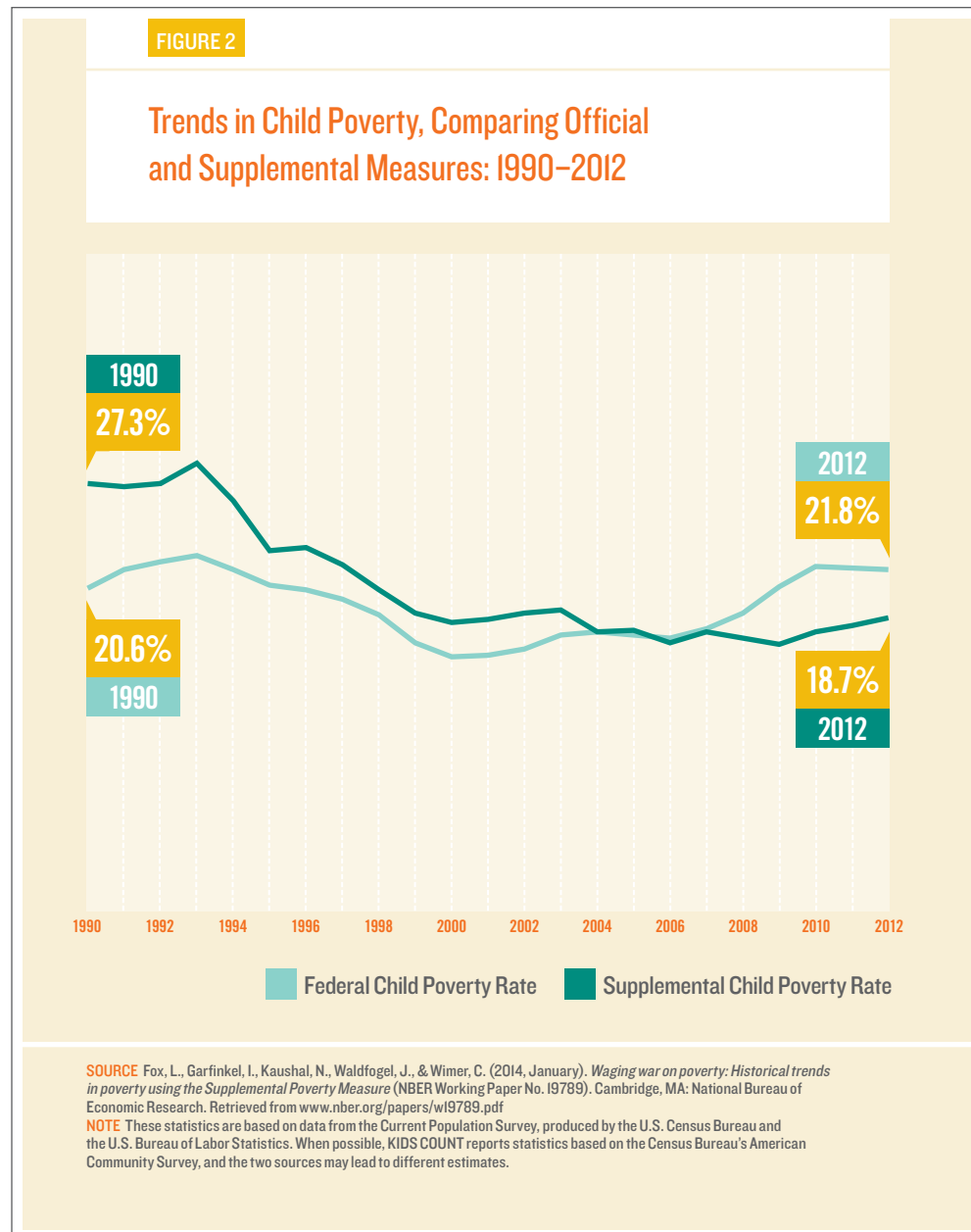
A stronger labor market and an increase in job quality, along with continued efforts to boost the education and training levels of low-income parents, would help to further reduce child poverty.

services to low-income children under 3 years old and their parents. Also in the 1990s, enrollment in the federal Head Start program, which serves 3- and 4-year-olds, increased significantly, and more states adopted or expanded prekindergarten programs that typically target low-income and other at-risk children. These efforts continued to expand until the recession decimated state budgets and halted progress.<sup>17</sup>

As a result of these expansions, participation in early childhood programs has substantially increased. Nationally, the percentage of 3- and 4-year-olds attending preschool increased from 38 percent to 51 percent between 1990 and 2012. Although long-term effects have been mixed,<sup>18</sup> program effectiveness is sometimes limited because only a small percentage of low-income children participate in programs of sufficient quality and intensity to overcome the developmental deficits associated with chronic economic hardship and low levels of parental education.

Nonetheless, the research is unequivocal that high-quality early childhood programs, along with other forms of early intervention, are essential for building a strong educational foundation for low-income children and narrowing the achievement gap. With the majority of mothers of young children in the labor force, prekindergarten and other early childhood programs also provide necessary care for kids with working moms.

Since 2002, when No Child Left Behind (NCLB) was implemented, federal education policy has focused on grades





K–12. NCLB requires annual testing of third through eighth graders and established the first federal-level accountability standards for public education systems, which are state and locally run. Subsequent education reforms include the Common Core State Standards, which specify performance benchmarks for each grade from kindergarten through 12th grade. The standards were adopted by 46 states and the District of Columbia between 2010 and 2012, in conjunction with stimulus funding and a competitive grant program, Race to the Top; three states dropped the standards this year.<sup>19</sup>

The effects of these major, costly policy changes are not yet clear. National math and reading scores as well as high school graduation rates have steadily improved for students of all races and income levels, but these positive developments preceded the policy changes of the past decade.

Although rarely noted, the achievement gap between African-American and white students has declined considerably during the past 50 years. Within that same period, however, the gap in standardized test scores between affluent and low-income students in the United States has grown about 40 percent.<sup>20</sup> Indeed, low test scores among our lowest-income students appear to account for America's mediocre rankings in international comparisons.

The prevailing narrative about American public education is that it is “failing,” but the reality is that the system serves the most advantaged children quite well, producing some of the highest test scores in the world. As both poverty

and wealth have become more concentrated residentially, evidence suggests that school districts and individual schools are becoming increasingly segregated by socioeconomic status.

Given that in-school factors account for only a third or less of the variation in test scores, we must face the fact that our high child poverty rate constrains our nation's academic achievement. Schools can make a difference at the margins, but they cannot overcome the vast cognitive and social-emotional development differences between high- and low-income children that are already entrenched by the time kids enter kindergarten.<sup>21</sup>

## Health

Some of the largest gains in the well-being of children since 1990 are because of improvements in health and safety. One of the greatest policy successes for low-income children during the past two decades is increased access to health insurance through Medicaid expansions and the implementation of the State Children's Health Insurance Program in 1997. In 1990, 13 percent of children were uninsured. That figure fell to 9 percent in 2012. Despite declines in employer-sponsored health insurance coverage, the overall rate of insured children has increased because of expanding public health coverage for kids.

Other child health and safety indicators have steadily improved during the past couple of decades, with additional gains in recent years. Mortality rates for children of all ages continue to fall as a result

**Given that in-school factors account for only a third or less of the variation in test scores, we must face the fact that our high child poverty rate constrains our nation's academic achievement.**

of medical advances and increased safety measures, such as more widespread use of seat belts, car seats and bike helmets. Infant mortality has declined because of medical advances, wider access to prenatal care and healthier behaviors, such as not smoking during pregnancy. However, the decline in infant mortality, along with delayed childbearing, has led to a small increase in the prevalence of babies born with a low birthweight.

Although not tracked by the KIDS COUNT index, one growing health problem is childhood obesity. Rates of childhood obesity skyrocketed in recent decades, especially among low-income children and children of color. However, new research shows a promising decline in obesity among 2- to 5-year-olds. These findings are important because eating patterns set in early childhood tend to persist and have long-term consequences.

### **Family and Community**

One of the most troubling trends for child well-being is the steady decline in the percentage of children living with two married parents. In 2012, 35 percent of children were living with a single parent; the rate for African-American children was 67 percent. About half of all children will spend a portion of their childhood in a single-parent home.

There is near universal agreement among researchers that being raised by married parents in a low-conflict household provides children with tremendous economic and emotional benefits. Children of

single parents are at higher risk of negative outcomes later in life, such as dropping out of school, becoming a teen parent or going through a divorce in adulthood.

For families at the bottom of the income scale, single parenthood poses risks to children that are compounded by other challenges. Unmarried mothers are more likely to be younger, to be less educated and to have children with more than one partner, creating complex families with multiple fathers and half-siblings. Although such complexity is not inherently negative, it can create instability and conflict for children, especially when the family is facing multiple stress factors. There is a widening gap in resources and experiences between children with unmarried, low-income mothers and those with married, highly educated parents.

Another factor compounding disadvantage is the growing concentration of poverty. After declining between 1990 and 2000, the rate of children living in areas of concentrated poverty has since increased. More than one in eight children (13 percent) live in a neighborhood where the poverty rate is 30 percent or higher.

An extraordinarily positive development is the dramatic reduction in the teen birth rate, which declined by more than half between 1990 and 2012. When young women postpone childbearing until their 20s, they are more likely to complete high school and obtain postsecondary education or training, and they stand a better chance of being employed. They also are more mature and more likely to make better decisions and be better prepared for parenthood

## Improving outcomes for all children is essential for our nation to remain strong, stable and globally competitive.



than teen moms. All of these factors can positively affect early child development.

Also on the positive side, the education level of parents has increased. In 1990, 22 percent of children lived in families with parents who did not have a high school diploma; by 2012, the figure had declined to 15 percent. Maternal education is one of the strongest predictors of success for children.<sup>22</sup>

### Looking Ahead

---

Our analysis of the trends in child well-being since 1990 indicates that there have been some important improvements in child health and safety, as well as in educational outcomes. The dramatic decline in the teen birth rate stands out as one of the most positive developments for the well-being of our youngest citizens.

As we look ahead, we face the daunting challenge of creating pathways to educational and economic opportunity for all children. This will require that we confront the harsh reality that too many of our country's children of color begin their lives with multiple disadvantages. They are more likely than their white peers to be born into poverty and to fragile families; they are more likely to grow up in communities where poverty is concentrated, jobs are scarce and violence is prevalent.

Because of residential segregation by race and class, many children of color attend neighborhood schools that are poorly funded and overcrowded. Under such conditions, education — which we, as a nation, deeply cherish as the great equalizer — simply exacerbates inequality,

as children from lower-income families are deprived of the high-quality early childhood programs and educational opportunities that higher-income families take for granted.

Improving outcomes for all children is essential for our nation to remain strong, stable and globally competitive. Throughout the remainder of this report we present examples of policy changes that have made a difference in the lives of low-income children. These examples are just a few of the many contributions made by leaders and advocates at the federal, state and local levels to improve the life chances of millions of American children and families during the past 25 years.

We don't have all the answers, and we don't fully understand all of the complex forces that affect opportunity and shape the future for our children. Well-intentioned, sincere and knowledgeable people hold profoundly divergent views on how best to move forward on some issues. But, we do have greater knowledge than ever before about what works and far greater consensus about where we should invest than much of our public discourse would suggest. If we can summon the political will, we certainly have sufficient knowledge to act now and to act boldly so that 25 years from now, our children and our country will be healthier, stronger and better prepared for all of the challenges and opportunities that lie ahead.

**Patrick T. McCarthy**  
President and CEO  
The Annie E. Casey Foundation





TRENDS

# STATUS OF CHILDREN

Since 1990, KIDS COUNT has ranked states annually on overall child well-being using an index of key indicators.

---

Four domains comprise the KIDS COUNT index to capture what children need most to thrive: (1) Economic Well-Being, (2) Education, (3) Health and (4) Family and Community. Each domain includes four indicators, for a total of 16. These indicators represent the best available data to measure the status of child well-being at the state and national levels. (For a more thorough description of the KIDS COUNT index, visit [www.aecf.org/2014db](http://www.aecf.org/2014db).)

This year's *Data Book* presents both short- and long-term trends. The current trends generally compare data from 2005 with those from 2012, which are often the most recent available. They allow us to compare how the country's children were faring mid-decade, prior to the economic crisis, with how they are doing in its aftermath. In honor of the 25th edition of the *Data Book*, we have also included data from 1990, the year the first *Data Book* was published, for most of the 16 indicators. State rankings focus only on the most recent data.

## National Trends in Child Well-Being

---

Comparing data from before and after the recession reveals positive and negative developments in child

well-being nationally (see Figure 3). Broadly speaking, children experienced gains in the Education and Health domains, but setbacks in the Economic Well-Being and Family and Community domains.

Three of the four Economic Well-Being indicators got worse, showing that children and families have not fully recovered from the deep recession, despite being five years into the recovery. Although still not back up to their pre-recession rates, there is a glimmer of hope in this year's economic data, with several indicators improving since 2010. Note that in 2012, the year of our most recent data, the national unemployment rate was nearly 8.1 percent, but has since dropped to 6.3 percent.<sup>23</sup> Given these recent gains in employment, one of the key factors to improving the economic well-being of families, we expect to see continued improvement in this domain in the data for 2013 and 2014.

In contrast, all four Education indicators — which cover preschool to high school graduation — showed some steady improvement in recent years. Notably, with 81 percent of high school students graduating on time in 2011/12, the U.S. high school graduation rate is at an all-time high.

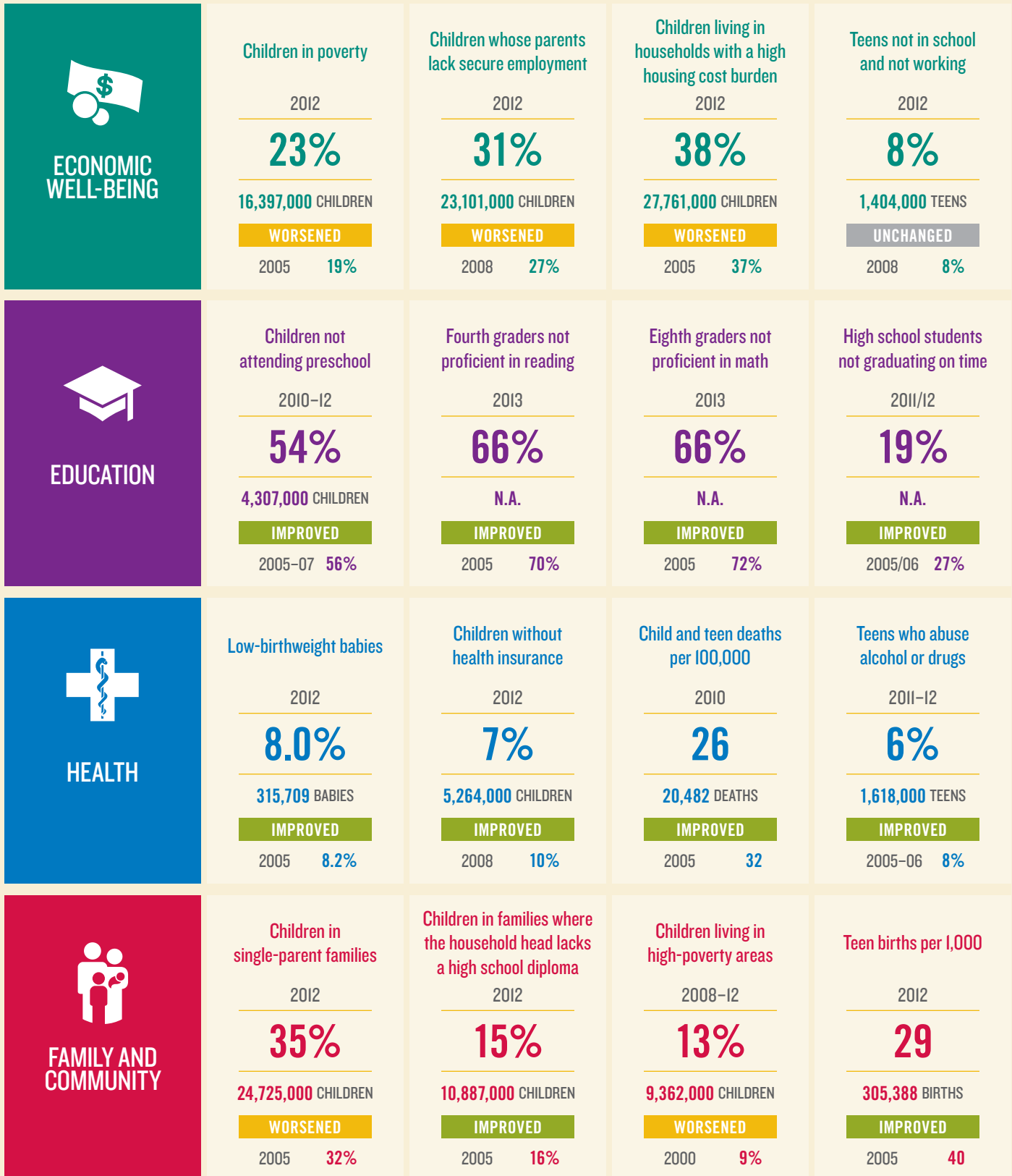
## Profile Pages Online

---

National and state profiles providing current and trend data for all 16 indicators are available at [www.aecf.org/2014db](http://www.aecf.org/2014db). National and state data are also available in Appendix 2, on page 46.

FIGURE 3

## National Trends in 16 Key Indicators of Child Well-Being by Domain



N.A. NOT AVAILABLE

Perhaps the most striking finding is that despite tremendous gains during recent decades for children of all races and income levels, inequities among children remain deep and stubbornly persistent.



Similarly child health continued to improve, with gains in all four indicators. Despite increased unemployment and a decline in employer-sponsored health insurance coverage during the past several years, fewer children lacked access to health insurance coverage in 2012 than before the recession. As a result of increased enrollment in public health insurance, 2 million more children had health insurance in 2012 than in 2008.

Trends in the Family and Community domain were mixed. The teen birth rate continued its dramatic decline, reaching an all-time low. And, a smaller percentage of children were living with parents who lack a high school diploma. However, the percentage of children living in high-poverty neighborhoods increased, as did that of children in single-parent families.

Overall, developments in child well-being during the past five or six years demonstrated important progress in some areas, while highlighting the substantial work that remains, to improve the prospects for the next generation.

### Racial Gaps in Child Well-Being

---

Perhaps the most striking finding is that despite tremendous gains during recent decades for children of all races and income levels, inequities among children remain deep and stubbornly persistent (see Figure 4). On nearly all of the measures that we track,

African-American, American Indian and Latino children continued to experience negative outcomes at rates that are higher than the national average. There are a few notable exceptions. African-American children were more likely to have health insurance coverage and to attend preschool than the national average. American Indian families with children were less likely to have a high housing cost burden, and Latino children were more likely to be born at a healthy birthweight.

However, on many indicators, children of color continued to face steep barriers to success. In 2012, African-American children were nearly twice as likely as the average child to live in a single-parent family. American Indian children were about half as likely to be covered by health insurance, and Latino children were the least likely to live with a household head who has at least a high school diploma.

In April 2014, the Foundation released *Race for Results: Building a Path to Opportunity for All Children*,<sup>24</sup> which explores what it takes for all children to become successful adults and the barriers to opportunity that continue to exist for many children of color. This KIDS COUNT Policy Report features the new Race for Results Index, which compares how children are progressing on key milestones across racial and ethnic groups at the national and state levels. For more information, access the report at [www.aecf.org/race4results](http://www.aecf.org/race4results).

**FIGURE 4**

## National Key Indicators by Race and Hispanic Origin

| <b>ECONOMIC WELL-BEING</b>  |         | National Average | African American | American Indian | Asian and Pacific Islander | Hispanic    | Non-Hispanic White | Two or More Races |
|---|---------|------------------|------------------|-----------------|----------------------------|-------------|--------------------|-------------------|
| Children in poverty   | 2012    | <b>23%</b>       | <b>40%</b>       | <b>37%</b>      | <b>15%</b>                 | <b>34%</b>  | <b>14%</b>         | <b>24%</b>        |
| Children whose parents lack secure employment                             | 2012    | <b>31%</b>       | <b>49%</b>       | <b>49%</b>      | <b>22%</b>                 | <b>38%</b>  | <b>24%</b>         | <b>36%</b>        |
| Children living in households with a high housing cost burden             | 2012    | <b>38%</b>       | <b>51%</b>       | <b>35%</b>      | <b>38%</b>                 | <b>50%</b>  | <b>29%</b>         | <b>40%</b>        |
| Teens not in school and not working                                       | 2012    | <b>8%</b>        | <b>12%</b>       | <b>16%</b>      | <b>4%</b>                  | <b>10%</b>  | <b>6%</b>          | <b>8%</b>         |
| <b>EDUCATION</b>  |         | National Average | African American | American Indian | Asian and Pacific Islander | Hispanic    | Non-Hispanic White | Two or More Races |
| Children not attending preschool  | 2010-12 | <b>54%</b>       | <b>51%</b>       | <b>59%</b>      | <b>48%</b>                 | <b>63%</b>  | <b>51%</b>         | <b>53%</b>        |
| Fourth graders not proficient in reading                                  | 2013    | <b>66%</b>       | <b>83%*</b>      | <b>78%*</b>     | <b>49%*</b>                | <b>81%</b>  | <b>55%</b>         | <b>61%*</b>       |
| Eighth graders not proficient in math                                     | 2013    | <b>66%</b>       | <b>86%*</b>      | <b>79%*</b>     | <b>40%*</b>                | <b>79%</b>  | <b>56%</b>         | <b>63%*</b>       |
| High school students not graduating on time                               | 2011/12 | <b>19%</b>       | <b>32%*</b>      | <b>32%*</b>     | <b>7%*</b>                 | <b>24%</b>  | <b>15%</b>         | <b>N.A.</b>       |
| <b>HEALTH</b>   |         | National Average | African American | American Indian | Asian and Pacific Islander | Hispanic    | Non-Hispanic White | Two or More Races |
| Low-birthweight babies  | 2012    | <b>8.0%</b>      | <b>12.8%</b>     | <b>7.6%</b>     | <b>8.2%</b>                | <b>7.0%</b> | <b>7.0%</b>        | <b>N.A.</b>       |
| Children without health insurance   | 2012    | <b>7%</b>        | <b>6%</b>        | <b>16%</b>      | <b>7%</b>                  | <b>12%</b>  | <b>5%</b>          | <b>6%</b>         |
| Child and teen deaths per 100,000   | 2010    | <b>26</b>        | <b>36</b>        | <b>30</b>       | <b>14</b>                  | <b>21</b>   | <b>25</b>          | <b>N.A.</b>       |
| Teens who abuse alcohol or drugs  | 2012    | <b>6%</b>        | <b>4%*</b>       | <b>8%*</b>      | <b>2%**</b>                | <b>7%</b>   | <b>6%</b>          | <b>8%</b>         |
| <b>FAMILY AND COMMUNITY</b>   |         | National Average | African American | American Indian | Asian and Pacific Islander | Hispanic    | Non-Hispanic White | Two or More Races |
| Children in single-parent families  | 2012    | <b>35%</b>       | <b>67%</b>       | <b>53%</b>      | <b>17%</b>                 | <b>42%</b>  | <b>25%</b>         | <b>43%</b>        |
| Children in families where the household head lacks a high school diploma | 2012    | <b>15%</b>       | <b>14%</b>       | <b>20%</b>      | <b>12%</b>                 | <b>36%</b>  | <b>6%</b>          | <b>10%</b>        |
| Children living in high-poverty areas                                     | 2008-12 | <b>13%</b>       | <b>30%</b>       | <b>28%</b>      | <b>7%</b>                  | <b>23%</b>  | <b>4%</b>          | <b>11%</b>        |
| Teen births per 1,000   | 2012    | <b>29</b>        | <b>44</b>        | <b>35</b>       | <b>10</b>                  | <b>46</b>   | <b>20</b>          | <b>N.A.</b>       |

\*Data are for non-Hispanics. \*\*Data results do not include Native Hawaiians/Pacific Islanders. N.A. Data not available.

# OVERALL CHILD WELL-BEING

---



National data mask a great deal of state-by-state and regional variations in child well-being. A state-level examination of the data reveals a hard truth: A child's chances of thriving depend not just on individual, familial and community characteristics, but also on the state in which she or he is born and raised. States vary considerably in their amount of wealth and other resources. State policy choices also strongly influence children's chances for success.

We derive a composite index of overall child well-being for each state by combining data across the four domains: (1) Economic Well-Being, (2) Education, (3) Health and (4) Family and Community. These composite scores are then translated into a single state ranking for child well-being.

Massachusetts ranked first among states for overall child well-being in this year's *Data Book*, followed by Vermont and Iowa. New Hampshire had held the top spot for several years, but ranked fourth among the states. The three lowest-ranked states were Nevada, New Mexico and Mississippi.

As is apparent in the map on page 21, distinct regional patterns emerged from the state rankings. All of the northeastern states

were in the top 10 in terms of overall child well-being, apart from Maine, Pennsylvania, Rhode Island and New York, which fell in the middle. Most of the states in the Midwest and Mountain regions ranked in the middle on overall child well-being, with the exception of Iowa, Minnesota, North Dakota and Nebraska, which were in the top 10.

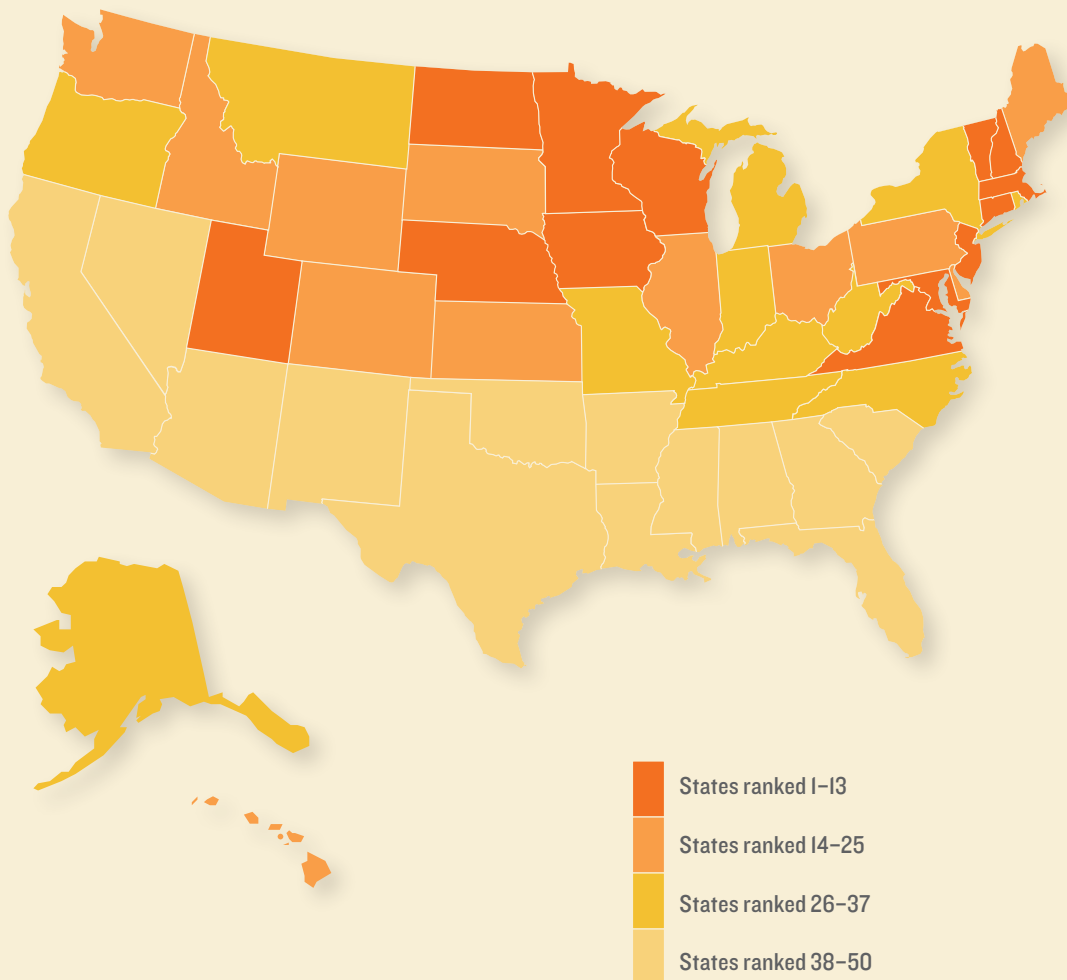
States in the Southeast, Southwest and Appalachia — where the poorest states are located — populated the bottom of the overall rankings. In fact, with the exception of California, the 15 lowest-ranked states were located in these regions. States in the Southwest occupied three of the five lowest rankings for child well-being.

However, as will be explored in the sections that follow, the overall rankings obscure some important variations within states. Although most states' rankings did not vary dramatically across domains, there were a few exceptions. For example, Oregon ranked among the top 10 states in the Health domain, but only placed 40th in terms of the Economic Well-Being of its children. Conversely, Wyoming ranked sixth for Economic Well-Being, but was among the worst 10 states for Health. For all states, the index identifies bright spots and room for improvement.

---

## Overall Child Well-Being by State: 2014

The map below illustrates how states ranked on overall child well-being by state. The overall rank is a composite index derived from the combined data across the four domains: (1) Economic Well-Being, (2) Education, (3) Health and (4) Family and Community.



### Overall Rank: 2014

- 1 Massachusetts
- 2 Vermont
- 3 Iowa
- 4 New Hampshire
- 5 Minnesota
- 6 North Dakota
- 7 Connecticut
- 8 New Jersey
- 9 Virginia
- 10 Nebraska
- 11 Utah
- 12 Maryland
- 13 Wisconsin
- 14 Maine
- 15 Kansas
- 16 Pennsylvania
- 17 South Dakota
- 18 Washington
- 19 Wyoming
- 20 Illinois
- 21 Idaho
- 22 Colorado
- 23 Delaware
- 24 Ohio
- 25 Hawaii
- 26 Rhode Island
- 27 Indiana
- 28 New York
- 29 Missouri
- 30 Oregon
- 31 Montana
- 32 Michigan
- 33 Alaska
- 34 North Carolina
- 35 Kentucky
- 36 Tennessee
- 37 West Virginia
- 38 Florida
- 39 Oklahoma
- 40 California
- 41 Arkansas
- 42 Georgia
- 43 Texas
- 44 Alabama
- 45 South Carolina
- 46 Arizona
- 47 Louisiana
- 48 Nevada
- 49 New Mexico
- 50 Mississippi



# ECONOMIC WELL-BEING

25<sup>TH</sup>  
EDITION

TURNING THE CURVE: 25 YEARS OF KIDS COUNT

## Advocates Fight for the State Earned Income Tax Credit in Illinois

For nearly two decades, advocates in Illinois have fought to secure and improve a state Earned Income Tax Credit. EITCs offset income tax liability and may provide a wage supplement for parents with very low earnings; state credits build on the federal EITC. With nearly every dollar spent going directly to low-income working families, EITCs are one of the most cost-effective ways to fight child poverty.

Voices for Illinois Children was instrumental in instituting the state EITC in 2000, although the credit was originally temporary and nonrefundable. Nonrefundable credits do not benefit families whose incomes are so low that they do not owe state income taxes. Set at 5 percent of the federal EITC,

the original Illinois credit was one of the smallest in the nation.

During subsequent years, Voices and other advocates worked to improve the EITC. In 2003, state officials made the credit permanent and refundable. In 2007, the coalition of advocates secured the repeal of a provision that restricted funding for the EITC. And, in a major victory in 2011, the legislature increased the value of the state EITC to 7.5 percent of the federal credit for tax year 2012 and to 10 percent for 2013.<sup>25</sup> In 2012, more than 900,000 families received state EITC benefits, totaling \$208 million and reaching 1.2 million children.<sup>26</sup> Current advocacy efforts aim to double the credit to 20 percent of the federal EITC.

### EARNED INCOME TAX CREDIT IN ILLINOIS: 2012

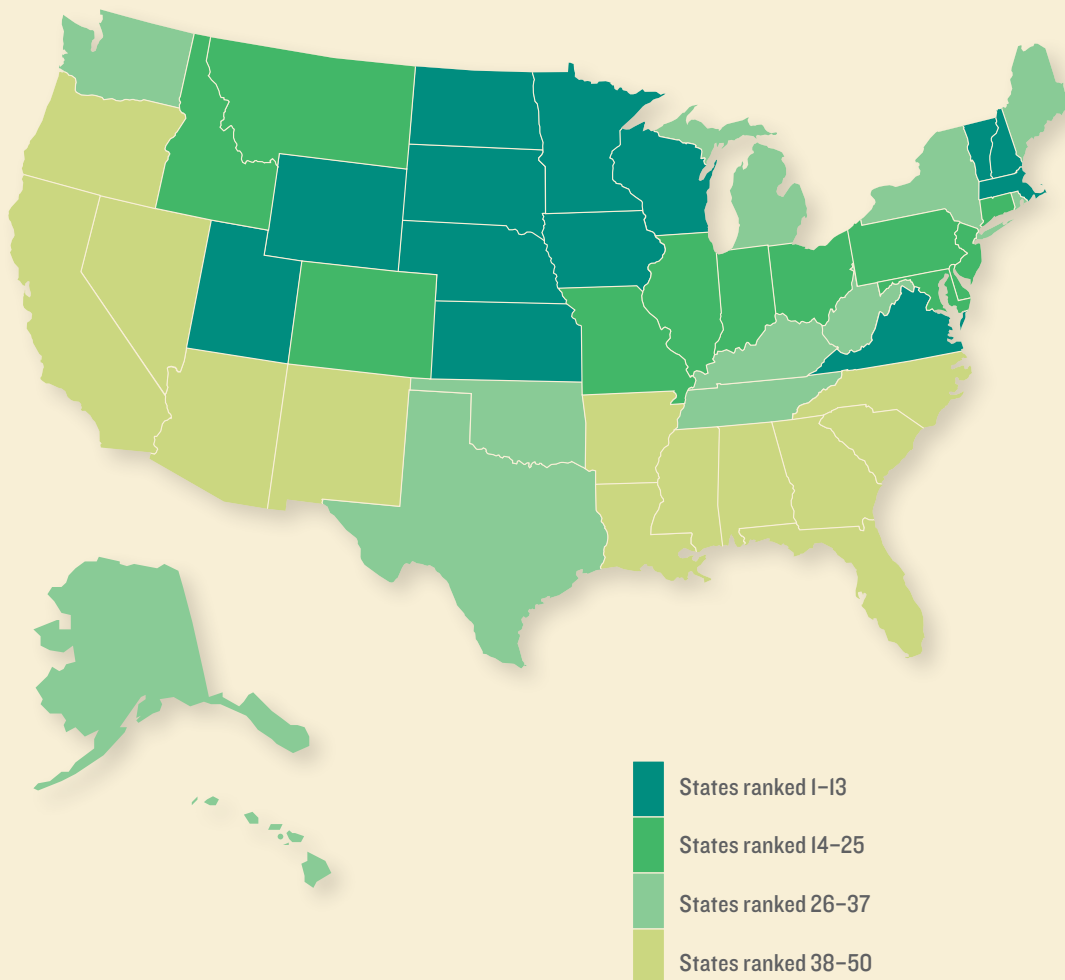
In 2012, more than 900,000 families received state EITC benefits totaling \$208 million, reaching 1.2 million children.





## A State-to-State Comparison of Economic Well-Being: 2014

To help children grow into successful, productive adults, their parents need well-paying jobs, affordable housing and the ability to invest in their children’s future. When parents are unemployed or earn low wages, they may struggle to meet their children’s most basic needs. Economic uncertainty also increases parental stress, which, in turn, can compromise parenting.<sup>27</sup> The negative effects of poverty on children also increase the chances of poor outcomes for youth and young adults, such as teen pregnancy and failure to graduate from high school.<sup>28</sup>



### Economic Well-Being Domain Rank: 2014

- 1 North Dakota
- 2 South Dakota
- 3 Iowa
- 4 Minnesota
- 5 Nebraska
- 6 Wyoming
- 7 Kansas
- 8 Vermont
- 9 Wisconsin
- 10 Utah
- 11 Virginia
- 12 New Hampshire
- 13 Massachusetts
- 14 Maryland
- 15 Connecticut
- 16 New Jersey
- 17 Pennsylvania
- 18 Colorado
- 19 Indiana
- 20 Idaho
- 21 Illinois
- 22 Ohio
- 23 Delaware
- 24 Missouri
- 25 Montana
- 26 Rhode Island
- 27 Washington
- 28 West Virginia
- 29 Maine
- 30 Oklahoma
- 31 Alaska
- 32 Texas
- 33 Hawaii
- 34 Michigan
- 35 Kentucky
- 36 Tennessee
- 37 New York
- 38 North Carolina
- 39 Alabama
- 40 Oregon
- 41 South Carolina
- 42 Arkansas
- 43 Louisiana
- 44 Georgia
- 45 Florida
- 46 Arizona
- 47 Nevada
- 48 California
- 49 New Mexico
- 50 Mississippi

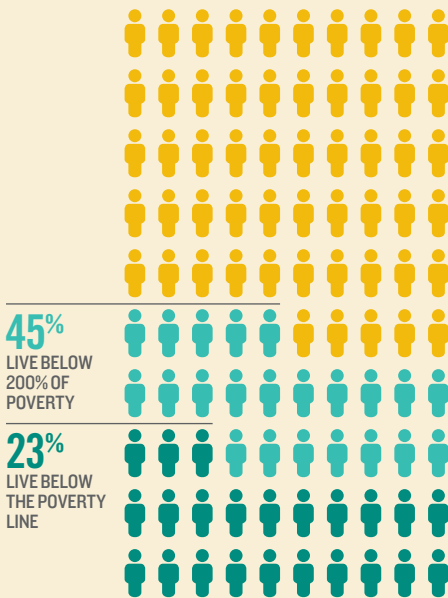


ECONOMIC WELL-BEING

Children in poverty

Nationally, 23 percent of children (16.4 million) lived in families with incomes below the poverty line; 32.8 million lived below 200 percent of the poverty line.

CHILDREN IN POVERTY: 2012



SOURCE: U.S. Census Bureau, 2012 American Community Survey.

Growing up in poverty is one of the greatest threats to healthy child development. Poverty and financial stress can impede children’s cognitive development and their ability to learn. It can contribute to behavioral, social and emotional problems and poor health. The risks posed by economic hardship are greatest among children who experience poverty when they are young and among those who experience persistent and deep poverty.<sup>29</sup> Already high compared with other developed nations, the child poverty rate in the United States increased dramatically as a result of the economic crisis. The official poverty line in 2012 was \$23,283 for a family of two adults and two children.

- Nationally, 23 percent of children (16.4 million) lived in poor families in 2012, up from 19 percent in 2005 (13.4 million), representing an increase of 3 million more children in poverty. After climbing for several years, the child poverty rate did not increase between 2011 and 2012.
- The rate of child poverty for 2012 ranged from a low of 13 percent in North Dakota, to a high of 35 percent in Mississippi.
- The child poverty rate among African Americans (40 percent) was almost three times the rate for non-Hispanic whites (14 percent) in 2012.

ECONOMIC WELL-BEING

Children whose parents lack secure employment

Children living in families lacking secure parental employment, defined as those families where no parent works full time, year round, are particularly vulnerable. Without at least one parent employed full time, children are more likely to fall into poverty. Yet, too many parents lack the education and skills needed to secure a good full-time job and are forced to piece together part-time or temporary work that does not provide sufficient or stable income. The recession exacerbated both unemployment and underemployment. Even a full-time job at a low wage does not necessarily lift a family out of poverty. Without access to benefits and tax credits, one adult in a two-parent family with two children would need to earn \$11.64 per hour — \$4.39 more than the current federal minimum wage — working 40 hours per week for 50 weeks per year just to reach the poverty line.

- In 2012, three in 10 children (23.1 million) lived in families where no parent had full-time, year-round employment. Since 2008, the number of such children climbed by 2.9 million.
- North Dakota had the lowest percentage of children in families without secure parental employment in 2012 (19 percent). Mississippi had the highest rate, at 40 percent.
- Roughly half (49 percent) of all American Indian children and African-American children had no parent with full-time, year-round employment in 2012, compared with 22 percent of Asian and Pacific Islander children, 24 percent of non-Hispanic white children and 38 percent of Latino children.

## Children living in households with a high housing cost burden

Family income is only one component of financial security; the cost of basic expenses also matters. Housing is typically one of the largest expenses that families face. This measure identifies the proportion of children living in households that spend more than 30 percent of their pretax income on housing, whether they are renters or homeowners. Low-income families, in particular, are unlikely to be able to meet all of their basic needs if housing consumes nearly one-third or more of their income.

- Across the nation, 38 percent of children (27.8 million) lived in households with a high housing cost burden in 2012, compared with 37 percent in 2005 (27.4 million). The rate of families with disproportionately high housing costs has increased dramatically since 1990 and peaked in 2010 at the height of the recent housing crisis when 41 percent of children lived in families with a high housing cost burden.
- In 2012, California had the highest percentage of children — a startling 51 percent — living in households that spent more than 30 percent of income for housing. North Dakota had the lowest, at 16 percent.
- Roughly half of African-American children (51 percent) and Hispanic children (50 percent) lived in households with a high housing cost burden in 2012, compared with 29 percent of non-Hispanic white children.

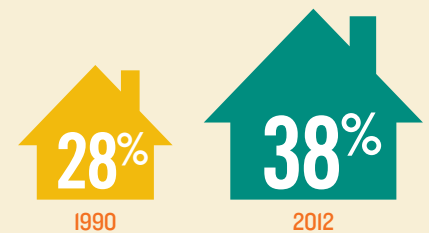
## Teens not in school and not working

Teens who leave school and do not become part of the workforce are at high risk of experiencing negative outcomes as they transition to adulthood. The percentage of teens not in school and not working (sometimes referred to as “disconnected youth” or “idle teens”) includes young people ages 16 to 19 who are not engaged in school or the workforce. While those who have dropped out of school are clearly vulnerable, many young people who have finished school but are not working are also at a disadvantage in terms of achieving economic success in adulthood.

- Nationally, 8 percent of youth were disconnected from both work and school in 2012. About 1.4 million teens between the ages of 16 and 19 were neither enrolled in school nor working. This indicator has not changed dramatically over time, but in 2012, more young people were not in school and not working than in 1990.<sup>30</sup>
- At 4 percent, South Dakota and Vermont had the lowest rate of teens not in school and not working in 2012. Connecticut, Iowa, Massachusetts, Minnesota and North Dakota were close behind, at 5 percent. In contrast, Mississippi and New Mexico had the highest rate, at 12 percent.
- American Indian, African-American and Latino teens had considerably higher rates of being neither in school nor working than their white and Asian and Pacific Islander counterparts.

The rate of families with a disproportionately high housing cost burden has increased dramatically since 1990.

PERCENTAGE OF CHILDREN LIVING IN HOUSEHOLDS WITH A HIGH HOUSING COST BURDEN: 1990 AND 2012



SOURCE: U.S. Census Bureau, 1990 Census and 2012 American Community Survey.



# EDUCATION

25<sup>TH</sup>  
EDITION

TURNING THE CURVE: 25 YEARS OF KIDS COUNT

## Preschool Success in New Jersey

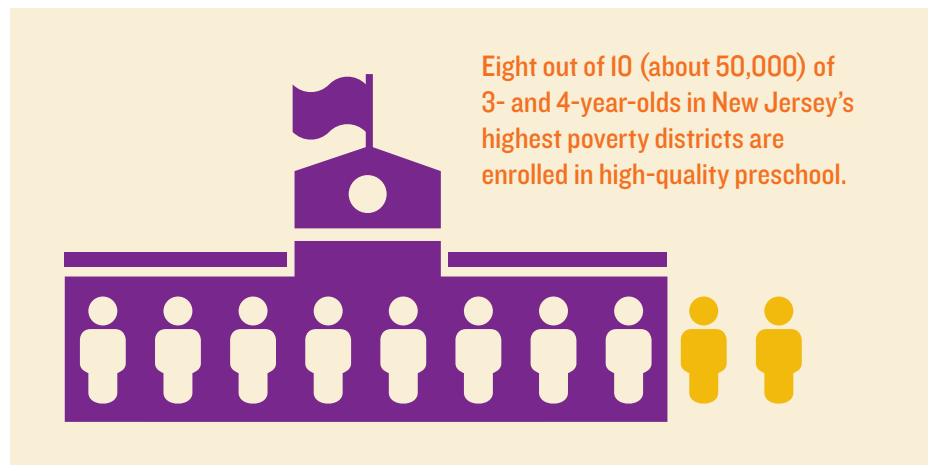
High-quality preschool matters, which is good news for the 50,000 low-income New Jersey children who benefit each year from a state-funded effort. In 1999, the state began enrolling 3- and 4-year-olds in high-quality preschool across the state's highest poverty districts. The program now serves about 80 percent of preschool-aged children in those districts.

A recent evaluation found that by fifth grade, children who attended the state program for two years were, on average, nearly a year ahead of students who had not enrolled in the program. These positive effects were considerably larger than those found in programs with less funding. Small classes, well-trained teachers,

a curriculum aligned with high standards and support services for children and families contributed to this program's success.<sup>31</sup>

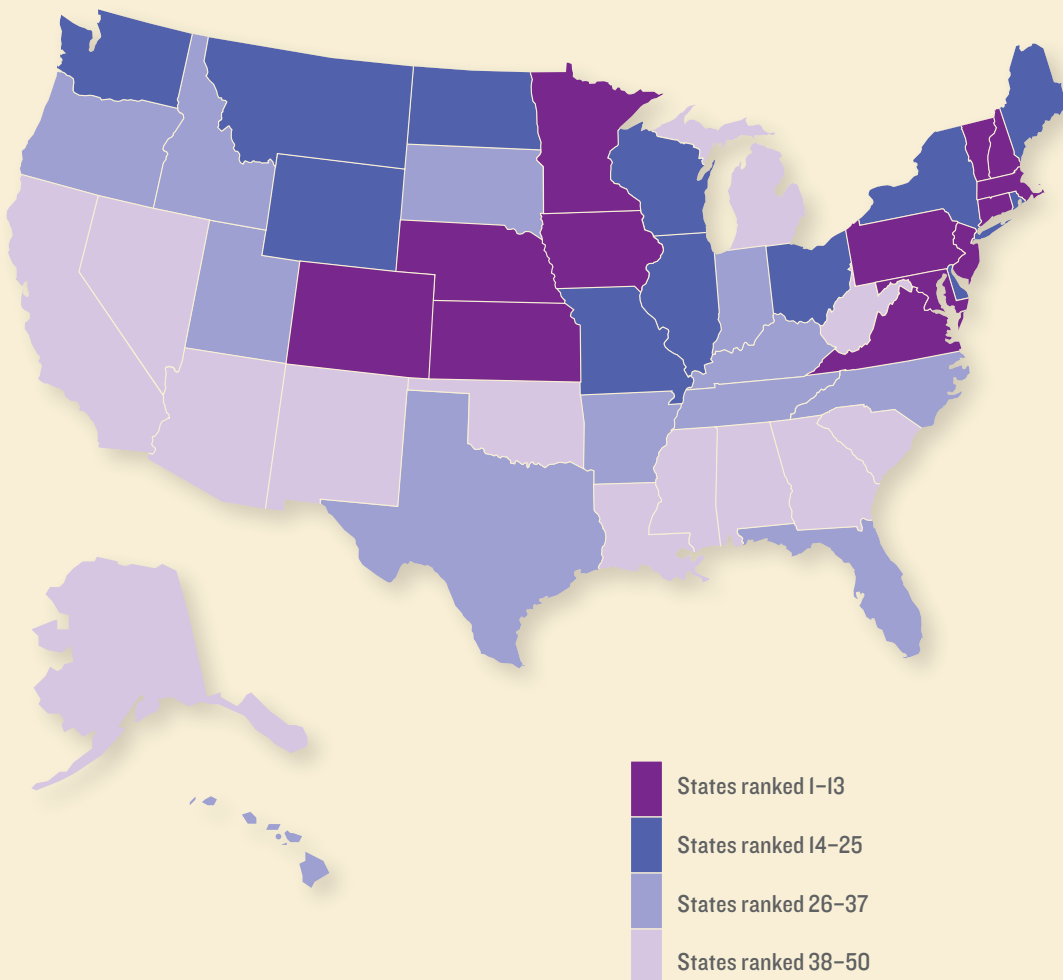
Advocates for Children of New Jersey played a key role in bringing early care and learning advocates together to develop a mixed-delivery system that improved the quality of community-based child care centers, while utilizing some public school classrooms. The organization led a coalition of early childhood stakeholders who successfully forced the state to require that preschool teachers have a bachelor's degree and receive the resources to acquire the necessary education. Those benefits to teachers are giving children a good start.

PRE-SCHOOL ENROLLMENT IN HIGH-POVERTY DISTRICTS IN NEW JERSEY: 2013/14



## A State-to-State Comparison of Education: 2014

Establishing the conditions that promote successful educational achievement for children begins with quality prenatal care and continues into the early elementary school years. With a strong and healthy beginning, children can more easily stay on track to remain in school and graduate, pursue postsecondary education and training and successfully transition to adulthood. Yet the United States continues to have significant gaps in educational achievement by race and income.<sup>32</sup> Addressing the achievement gap will be key to our future workforce competing on a global scale.



### Education Domain Rank: 2014

- 1 Massachusetts
- 2 New Jersey
- 3 Vermont
- 4 New Hampshire
- 5 Connecticut
- 6 Minnesota
- 7 Pennsylvania
- 8 Maryland
- 9 Nebraska
- 10 Virginia
- 11 Colorado
- 12 Kansas
- 13 Iowa
- 14 Maine
- 15 Wisconsin
- 16 Ohio
- 17 Illinois
- 18 New York
- 19 North Dakota
- 20 Washington
- 21 Montana
- 22 Missouri
- 23 Delaware
- 24 Wyoming
- 25 Rhode Island
- 26 Indiana
- 27 Florida
- 28 North Carolina
- 29 Utah
- 30 Kentucky
- 31 Hawaii
- 32 South Dakota
- 33 Idaho
- 34 Texas
- 35 Oregon
- 36 Arkansas
- 37 Tennessee
- 38 Michigan
- 39 California
- 40 Georgia
- 41 Oklahoma
- 42 Alaska
- 43 South Carolina
- 44 Arizona
- 45 Alabama
- 46 West Virginia
- 47 Louisiana
- 48 Mississippi
- 49 New Mexico
- 50 Nevada



EDUCATION

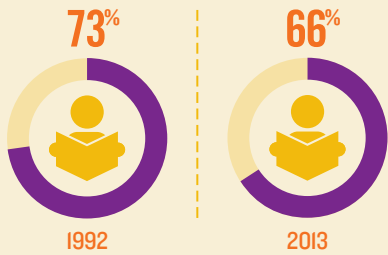
## Children not attending preschool

EDUCATION

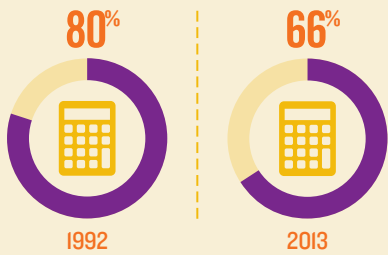
## Fourth graders not proficient in reading

Among public school students, math proficiency levels in eighth grade and reading proficiency levels in fourth grade were quite similar in 2013, but there has been greater improvement in eighth-grade math achievement since 1992.

PERCENTAGE OF 4TH GRADERS WHO SCORED BELOW PROFICIENT READING LEVEL



PERCENTAGE OF 8TH GRADERS WHO SCORED BELOW PROFICIENT MATH LEVEL



SOURCE U.S. Department of Education, National Center for Education Statistics, 1992 and 2013 National Assessment of Educational Progress.

High-quality prekindergarten programs for 3- and 4-year-olds can improve school readiness, with the greatest gains accruing to the highest-risk children. Head Start and the expansion of state-funded programs since the 1990s have greatly increased access to preschool.<sup>33</sup> During the past two decades, preschool attendance among 3- and 4-year-olds has increased by 34 percent. But many children, especially 3-year-olds, continue to be left out, exacerbating socioeconomic differences in educational achievement. Because of small sample sizes in some states, we combined data collected over a three-year period for this measure.

From 2010 to 2012, 4.3 million 3- and 4-year-olds were not attending preschool, representing more than half (54 percent) of all children in that age group. This is a slight improvement since 2005–07, when nearly 4.7 million children (56 percent) did not participate in a pre-K program.

In 2010–12, Connecticut and New Jersey, at 37 and 38 percent, respectively, had the lowest percentages of 3- and 4-year-olds not attending preschool. The states with the highest percentages of children not attending preschool in 2010–12 were Nevada (70 percent) and Arizona (67 percent).

Half of African-American and white 3- and 4-year-olds were not in pre-K programs; the percentage was nearly the same for Asian and Pacific Islander children (48 percent). The rates were noticeably higher for Latinos (63 percent) and American Indians (59 percent).

Proficiency in reading by the end of third grade is a crucial marker in a child’s educational development. In the early years, learning to read is a critical component of education. But beginning in fourth grade, children use reading to learn other subjects, and therefore, mastery of reading becomes a critical component in their ability to keep up academically. Children who reach fourth grade without being able to read proficiently are more likely to drop out of high school, reducing their earning potential and chances for success.<sup>34</sup> Although improvements in reading proficiency have occurred since the early 1990s, progress has been slow (7 percentage point improvement).<sup>35</sup>

An alarming 66 percent of fourth graders in public school were reading below the proficient level in 2013, a slight improvement from 2005, when the figure was 70 percent.

State differences in fourth-grade reading levels among public school students were wide. In 2013, Massachusetts had the lowest percentage of public school fourth graders not proficient in reading, 53 percent, compared with a high of 79 percent in Mississippi and New Mexico.

More than 80 percent of African-American and Latino fourth graders and 78 percent of American Indian fourth graders were not proficient in reading, compared with 49 percent of Asian and Pacific Islanders and 55 percent of non-Hispanic whites. Although these figures are deeply troubling, fourth-grade reading levels have improved since 2005 for all groups.

## Eighth graders not proficient in math

Competence in mathematics is essential for success in the workplace, which increasingly requires higher-level technical skills. The influence of high school students' math proficiency on later earnings has grown steadily over time. Students who take advanced math and science courses that require a strong mastery of math fundamentals are more likely to attend and complete college.<sup>36</sup> Even for young people who do not attend college, basic math skills improve employability.

- Among public school students, math proficiency levels in eighth grade and reading proficiency levels in fourth grade were quite similar in 2013, but there has been greater improvement in eighth-grade math achievement. Nationwide, two-thirds (66 percent) of public school eighth graders were not proficient in math in 2013, compared with 72 percent in 2005.

- At 45 percent, Massachusetts had the lowest percentage of eighth graders not proficient in math in 2013. Alabama had the highest rate, at 80 percent.

- In 2013, 56 percent of non-Hispanic white eighth graders were below the proficient level, compared with 79 percent of Latinos and American Indians and 86 percent of African Americans. But eighth-grade math achievement improved for all racial and ethnic groups from 2005 to 2013, including an 8 percentage point improvement for Latinos.

## High school students not graduating on time

Students who graduate from high school on time are more likely to continue to postsecondary education and training; they are more employable and have higher incomes than students who fail to graduate.<sup>37</sup> In 2012, median annual earnings for someone without a high school diploma (\$19,400) were 72 percent of those of a high school graduate (\$27,000) and 39 percent of the median earnings of someone with a bachelor's degree (\$49,200).<sup>38</sup> High school graduates have better health outcomes, make healthier choices and are less likely to engage in risky behavior.<sup>39</sup>

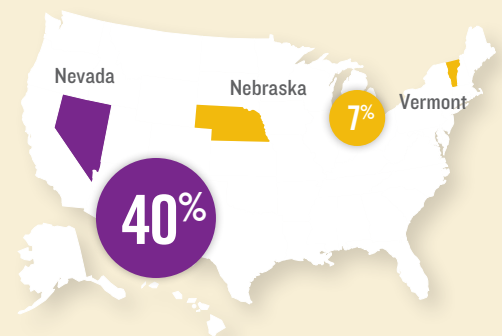
- Nationally, one in five (19 percent) high school students did not graduate on time in the 2011/12 school year. Steady improvements have occurred since 2005/06, when 27 percent did not graduate in four years.

- Among the states, the percentage of high school students not graduating from high school in four years ranged from a low of 7 percent in Nebraska and Vermont, to a high of 40 percent in Nevada.

- In 2011/12, 15 percent of non-Hispanic white students did not graduate from high school on time. The rate for African Americans and American Indians was twice as high.

Among the states, the percentage of high school students not graduating from high school in four years ranged from a low of 7 percent in Nebraska and Vermont, to a high of 40 percent in Nevada.

PERCENTAGE OF HIGH SCHOOL STUDENTS WHO DO NOT GRADUATE ON TIME: 2011/12



SOURCE U.S. Department of Education, National Center for Education Statistics, 2011/12 Common Core of Data.



# HEALTH

25<sup>TH</sup>  
EDITION

TURNING THE CURVE: 25 YEARS OF KIDS COUNT

## Health Insurance Coverage Improves Among Children in Arkansas

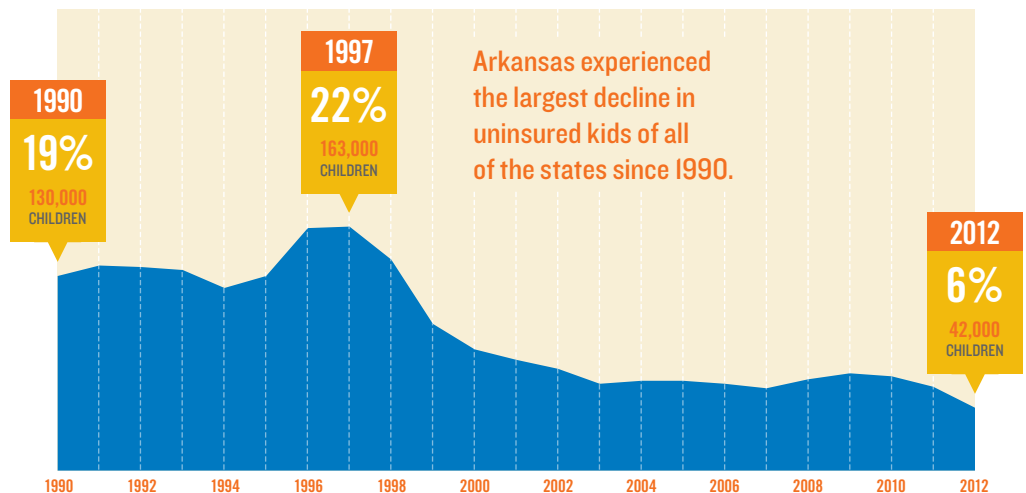
In 1990, Arkansas ranked 47th in health insurance coverage for children; nearly one in five children was uninsured. That figure increased until policy changes and outreach began to reduce the portion of children without insurance, which dropped to 6 percent in 2012. Although nearly half of the states had even lower rates of uninsured children, Arkansas experienced the largest decline in uninsured kids of all of the states since 1990.

After passage of the State Children's Health Insurance Program in 1997, Arkansas created ARKids First, which, along with subsequent reforms, expanded children's eligibility for health insurance and reduced barriers to enrollment and recertification. Arkansas has

been a leader in enrolling eligible children; in 2011, nearly 94 percent of eligible children were enrolled in ARKids First. Prior to the Affordable Care Act, Arkansas provided health insurance to few low-income adults; research shows that covering parents also helps reach uninsured children. New options now make coverage more accessible to low-income adults.<sup>40</sup>

Arkansas Advocates for Children and Families (AACF) has worked hard to expand affordable coverage to more children and families. AACF advocated for passage of ARKids First and has collaborated with the state's Department of Human Services to simplify eligibility criteria and enrollment procedures.

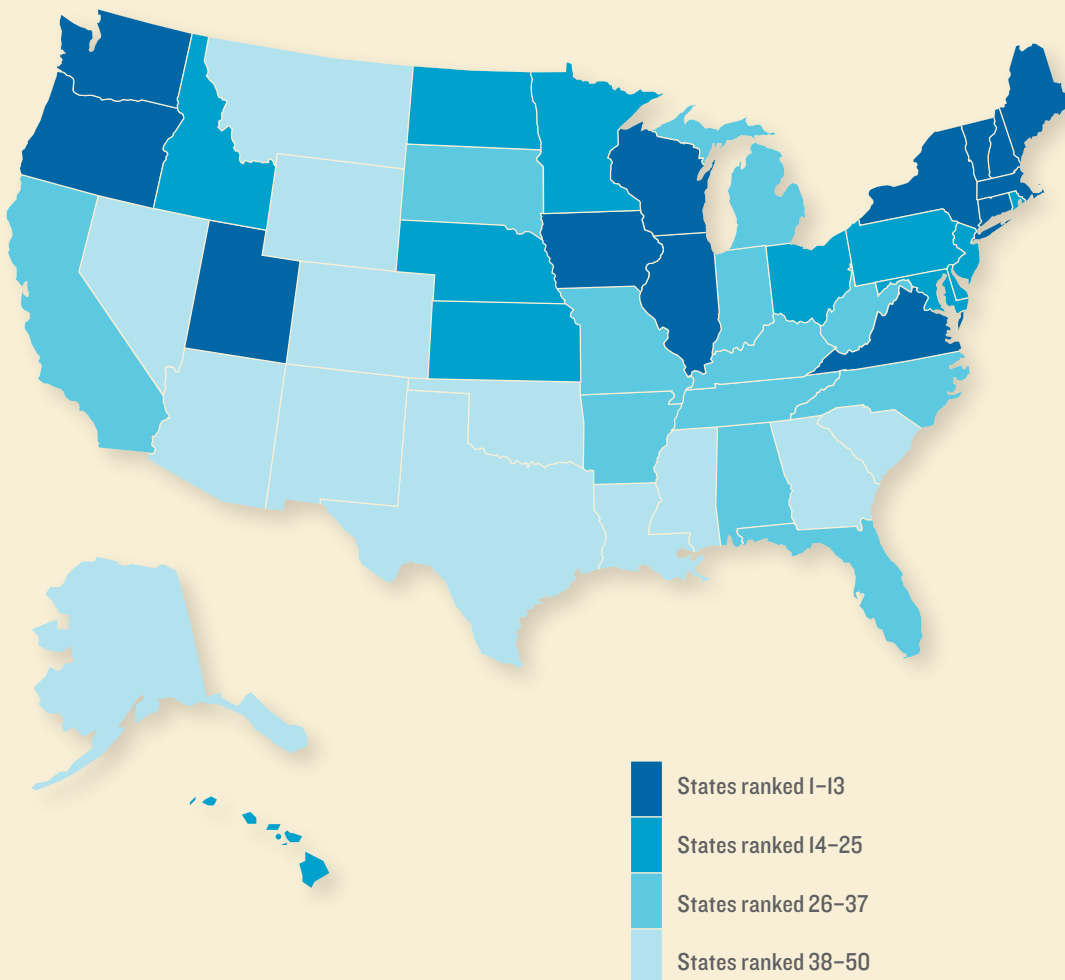
NUMBER OF CHILDREN WITHOUT HEALTH INSURANCE IN ARKANSAS: 1990-2012





## A State-to-State Comparison of Health: 2014

Children’s health is the foundation of their overall development, and ensuring that they are born healthy is the first step toward increasing the life chances of disadvantaged children. Poverty, poor nutrition, lack of preventive health care, substance abuse, maternal depression and family violence put children’s health at risk. Poor health in childhood impacts other critical aspects of a child’s life, such as school readiness and attendance, and can have lasting consequences on his or her future health and well-being.



### Health Domain Rank: 2014

- 1 Iowa
- 2 Massachusetts
- 3 Maine
- 4 Utah
- 5 New York
- 6 Vermont
- 7 Oregon
- 8 Connecticut
- 9 Washington
- 10 Wisconsin
- 11 Virginia
- 12 Illinois
- 13 New Hampshire
- 14 Maryland
- 15 Rhode Island
- 16 Delaware
- 17 Minnesota
- 18 Ohio
- 19 New Jersey
- 20 Idaho
- 21 Kansas
- 22 Hawaii
- 23 North Dakota
- 24 Nebraska
- 25 Pennsylvania
- 26 California
- 27 Indiana
- 28 Kentucky
- 29 Michigan
- 30 Missouri
- 31 Tennessee
- 32 North Carolina
- 33 South Dakota
- 34 Arkansas
- 35 West Virginia
- 36 Alabama
- 37 Florida
- 38 Georgia
- 39 Colorado
- 40 Texas
- 41 Oklahoma
- 42 Louisiana
- 43 South Carolina
- 44 Arizona
- 45 Wyoming
- 46 Alaska
- 47 Nevada
- 48 Mississippi
- 49 New Mexico
- 50 Montana



## HEALTH

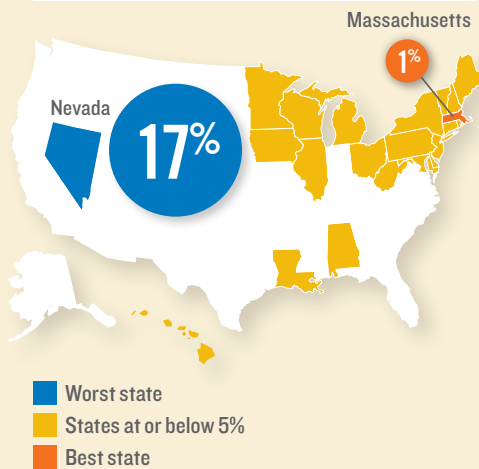
### Low-birthweight babies

## HEALTH

### Children without health insurance

In 21 states, the percentage of children without health coverage was 5 percent or less in 2012. Massachusetts had the lowest rate, 1 percent, compared with a high of 17 percent in Nevada.

PERCENTAGE OF CHILDREN WITHOUT HEALTH INSURANCE: 2012



SOURCE U.S. Census Bureau, 2012 American Community Survey.

The birth of a baby reminds us of the potential that exists in every new generation. Yet, the odds against thriving are higher for some newborns than for others. Babies born with a low birthweight (less than 5.5 pounds) have a high probability of experiencing developmental problems and short- and long-term disabilities and are at greater risk of dying within the first year of life. Although increases in multiple births during the past two decades have contributed to the rise in rates of low-birthweight babies, a low birthweight is also more likely among single births. Smoking, poor nutrition, poverty, stress, infections and violence can increase the risk of a baby being born with a low birthweight.<sup>41</sup> This indicator is the only one in the Health domain that worsened since 1990.

- Nationally, low-birthweight babies represented 8.0 percent of all live births in 2012. After gradually increasing over time, the percentage of low-birthweight babies has remained relatively stable for the past several years and is now slightly below the three-decade high of 8.3 percent reached in 2006.<sup>42</sup>
- Alaska had the lowest percentage of low-birthweight babies in 2012 — 5.7 percent of live births — while Mississippi had the highest, 11.6 percent.
- Among racial and ethnic groups, African-American babies were most likely to be born with a low birthweight, 12.8 percent of live births in 2012. Although this represents a decline from a high of 13.6 percent in 2005, it is still close to twice the low-birthweight rate for Latinos and non-Hispanic whites.

Children without health insurance coverage are less likely than insured children to have a regular health care provider and to receive care when they need it. They are also more likely to receive treatment after their condition has worsened, putting them at greater risk of hospitalization. Having health insurance can protect families from financial devastation when a child experiences a serious or chronic illness. Although the provision of employer-sponsored health insurance is declining, and most low-wage and part-time workers lack employer coverage, public health insurance has resulted in increased coverage among children during the past decade.

- Across the nation, 7 percent of children (5.3 million) lacked health insurance in 2012. That is a 30 percent improvement from 2008, when 10 percent of children were uninsured.
- In 21 states, the percentage of children without health coverage was 5 percent or less in 2012. Massachusetts had the lowest rate, 1 percent, compared with a high of 17 percent in Nevada.
- American Indian (16 percent) and Latino children (12 percent) were far more likely to be uninsured than non-Hispanic white (5 percent), African-American (6 percent) and Asian and Pacific Islander (7 percent) children.

## Child and teen deaths

The child and teen death rate (deaths per 100,000 children ages 1 to 19) reflects a broad array of factors: physical and mental health; access to health care; community factors (such as violence and environmental toxins); use of safety practices and, especially for younger children, the level of adult supervision. Accidents, primarily those involving motor vehicles, were the leading cause of death for children and youth, accounting for 32 percent of all deaths among children ages 1 to 14.<sup>43</sup> As children move into their mid- and late-teenage years, they encounter new risks that can be deadly. In 2010, accidents, homicides and suicides accounted for 73 percent of deaths to teens ages 15 to 19.<sup>44</sup>

- Nearly 20,500 children and youth ages 1 to 19 died in the United States in 2010, which translates into a mortality rate of 26 per 100,000 children and teens. The rate declined dramatically from 1990, when it was 46 per 100,000, resulting in roughly 10,600 fewer deaths in 2010.
- Connecticut, Massachusetts and Rhode Island had the lowest rate, 17 deaths per 100,000 children and youth in 2010. Montana fell at the other end of the spectrum, with a child and teen death rate of 45 per 100,000.
- The 2010 mortality rates for African-American and American Indian children and teens (36 and 30 per 100,000, respectively) were considerably higher than the death rates for children and youth of other racial and ethnic groups.

## Teens who abuse alcohol or drugs

Teen alcohol and drug abuse are associated with a variety of potentially harmful behaviors, such as engaging in risky sexual activity, driving under the influence of drugs or alcohol, abusing multiple substances and committing crimes. Alcohol and drug abuse among adolescents can cause both short- and long-term physical and mental health problems and exacerbate existing conditions. Teen substance abuse is also associated with poor academic performance and increased risk of dropping out of school. The negative consequences of teen alcohol and drug abuse can carry over into adulthood. Overall, alcohol and drug use by adolescents have declined during the past decade, although patterns vary by substance.

- In 2011–12, 6 percent of teens ages 12 to 17 had abused or were dependent on alcohol or drugs during the past year, declining from 8 percent in 2005–06.
- Rates of substance abuse among teens varied from a low of 5 percent in Utah, to a high of 9 percent in New Mexico and Montana.
- Among racial and ethnic groups, Asian and Pacific Islander teens and African-American teens were least likely (2 and 4 percent, respectively) to abuse or be dependent on alcohol or drugs.

Mortality rates for children of all ages continue to fall as a result of medical advances and increased safety measures, such as more widespread use of seat belts, car seats and bike helmets.

PERCENT CHANGE, CHILD AND TEEN DEATHS PER 100,000 BY CAUSE: 1990–2010

### MOTOR VEHICLE ACCIDENTS

-62%

### HOMICIDE

-50%

### SUICIDE

-33%

SOURCE Population Reference Bureau's analysis of data from the Centers for Disease Control and Prevention, National Center for Health Statistics, 1990 and 2010 Vital Statistics.



# FAMILY AND COMMUNITY

25<sup>TH</sup>  
EDITION

TURNING THE CURVE: 25 YEARS OF KIDS COUNT

## Ambitious Programs Reduce Teen Births in California

With one of the higher teen birth rates, California ranked 39th in 1990, alongside Alabama and South Carolina. The state's teen birth rate was 71 births per 1,000 females ages 15 to 19; nationally, the rate was 60 births per 1,000 teen girls. Concerned about the potential of teenage parenthood to derail the futures of young adults and their children, California officials undertook some of the most ambitious efforts in the country to reduce teen pregnancy.

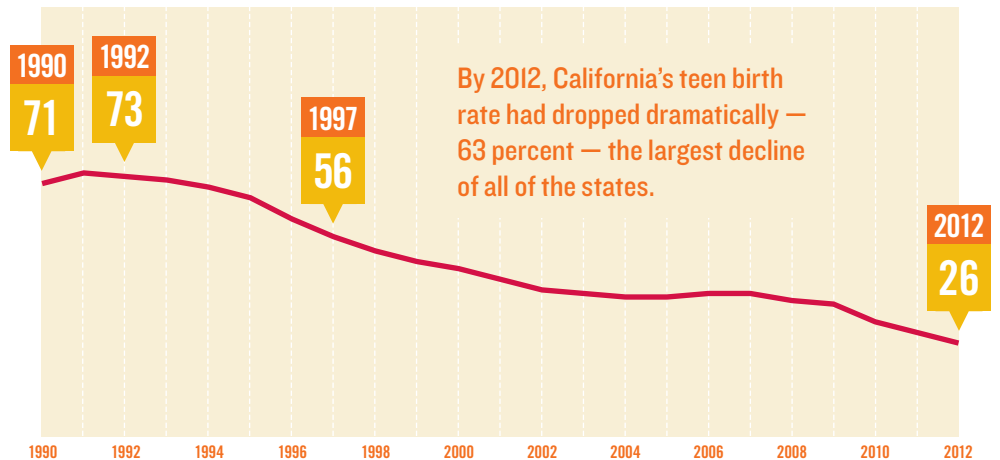
In 1997, the state launched an innovative program, Family Planning, Access, Care and Treatment (Family PACT), offering comprehensive family planning services to low-income women and men, including teenagers. In 2003, the state established comprehensive guidelines for sex education in public schools. Programs were required to provide scientifically reliable information about

contraception and abstinence, as well as HIV/AIDS prevention. These are just two examples in a sustained, multipronged campaign.<sup>45</sup>

By 2012, California's teen birth rate had dropped dramatically — 63 percent — the largest decline of all of the states. Although California ranked 20th, the teen birth rate had fallen to 26 births per 1,000 teenage girls, somewhat lower than the national rate of 29 births per 1,000 female teens. South Carolina and Alabama remained ranked at 39th and 41st, respectively.

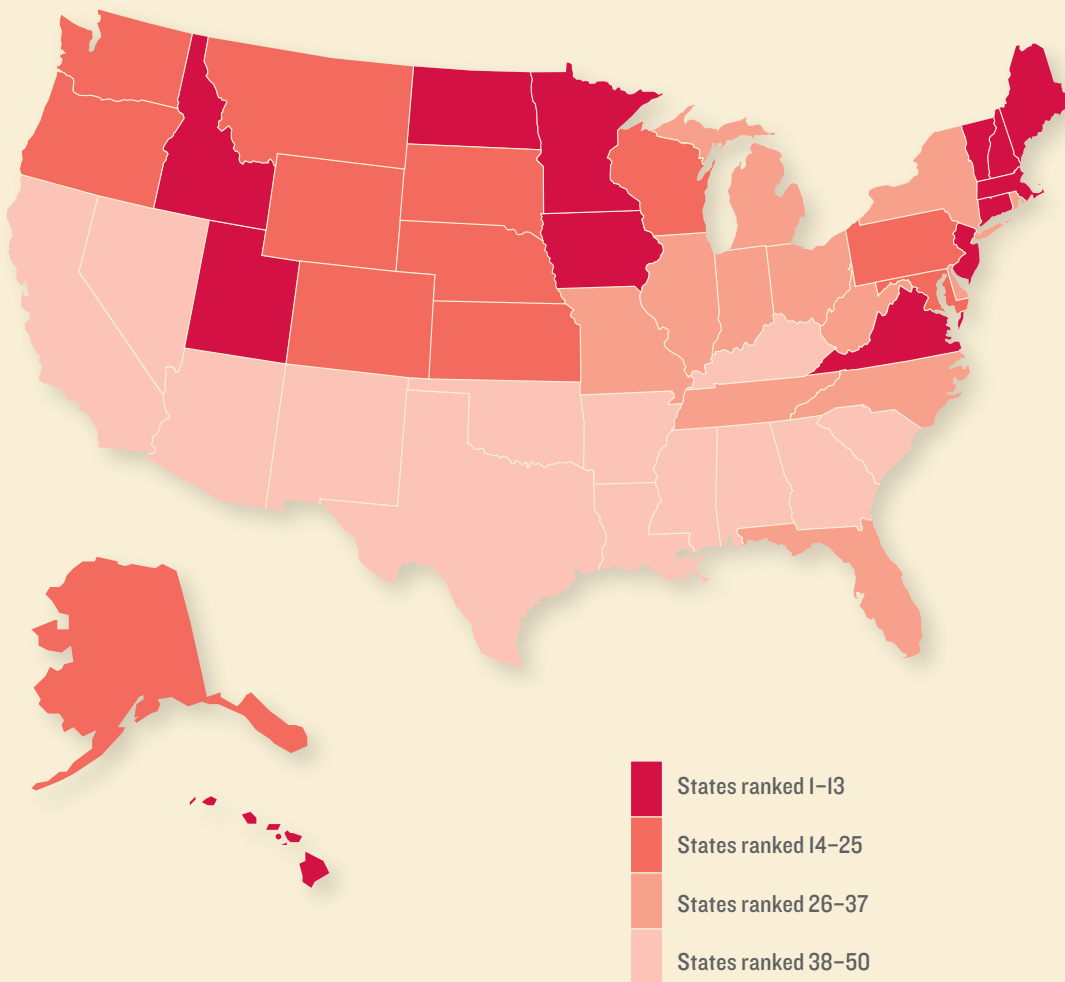
Elements of California's remarkably successful campaign to reduce teen births included long-term bipartisan support, a comprehensive statewide approach, coordination among government agencies, a complementary and sustained effort by the private sector and the involvement of a well-funded advocacy movement.

TEEN BIRTHS PER 1,000 FEMALES IN CALIFORNIA: 1990-2012



## A State-to-State Comparison of Family and Community: 2014

When children are nurtured and well cared for, they have better social-emotional and learning outcomes. Parents struggling with financial hardship are more prone to stress and depression, which can interfere with effective parenting. These findings underscore the importance of two-generation strategies that strengthen families by mitigating their underlying economic distress and addressing the well-being of both parents and children. Where families live also matters. When communities have strong institutions and the resources to provide safety, good schools and quality support services, families and their children are more likely to thrive.



### Family and Community Domain Rank: 2014

- 1 New Hampshire
- 2 Utah
- 3 Vermont
- 4 North Dakota
- 5 Minnesota
- 6 Maine
- 7 Iowa
- 8 Massachusetts
- 9 Connecticut
- 10 New Jersey
- 11 Idaho
- 12 Virginia
- 13 Hawaii
- 14 Montana
- 15 Alaska
- 16 Wyoming
- 17 Washington
- 18 Wisconsin
- 19 Maryland
- 20 Nebraska
- 21 Colorado
- 22 Oregon
- 23 Pennsylvania
- 24 South Dakota
- 25 Kansas
- 26 Delaware
- 27 Missouri
- 28 Illinois
- 29 Michigan
- 30 Ohio
- 31 Indiana
- 32 Rhode Island
- 33 West Virginia
- 34 New York
- 35 Florida
- 36 North Carolina
- 37 Tennessee
- 38 Oklahoma
- 39 Georgia
- 40 Kentucky
- 41 South Carolina
- 42 Alabama
- 43 California
- 44 Nevada
- 45 Arkansas
- 46 Arizona
- 47 Texas
- 48 Louisiana
- 49 New Mexico
- 50 Mississippi



FAMILY AND COMMUNITY

## Children in single-parent families

Children growing up in single-parent families typically have access to fewer economic or emotional resources than children in two-parent families. In 2012, 37 percent of single-parent families had incomes below the poverty line, compared with 9 percent of married couples with children. Compared with children in married-couple families, children raised in female-headed households are more likely to drop out of school, to have or cause a teen pregnancy and to experience a divorce in adulthood.<sup>46</sup>

- The percentage of children living in single-parent families rose from 32 percent in 2005 to 35 percent in 2012, representing an increase of more than 3 million children. Although remaining relatively constant during the past decade, the percentage of children living in single-parent families has risen significantly since 1990.<sup>47</sup>

- Nearly one in four of the 24.7 million children currently living with an unmarried parent is living with cohabiting domestic partners, compared with only 16 percent in 1990.

- At the state level, the percentage of children living in single-parent families in 2012 ranged from a low of 20 percent in Utah, to a high of 49 percent in Mississippi.

- Two-thirds (67 percent) of African-American children, more than half (53 percent) of American Indian children and 42 percent of Latino children lived in single-parent families. By comparison, 25 percent of non-Hispanic white children and 17 percent of Asian and Pacific Islander children lived in single-parent households.

FAMILY AND COMMUNITY

## Children in families where the household head lacks a high school diploma

Higher levels of parental education are strongly associated with better outcomes for children. Children whose parents have not graduated from high school are at greater risk of being born with a low birthweight and having health problems, and they are more likely to smoke and binge drink when they are older. Their school readiness and educational achievement are also at risk.<sup>48</sup> More highly educated parents are better able to provide their children with economic stability and security, which, in turn, enhances child development. During the past several decades, parental education levels have steadily increased.

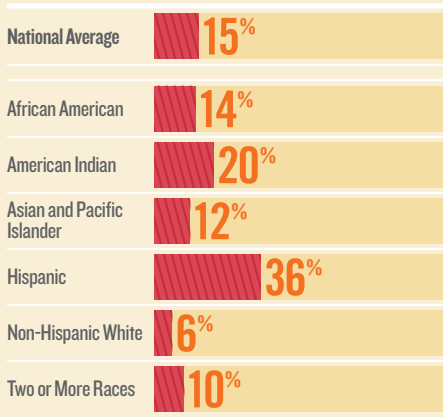
- In 2012, 15 percent of children lived in households headed by an adult without a high school diploma. While the indicator improved only slightly since 2005, there has been substantial improvement since 1990, when 22 percent of children lived with parents who lacked a high school diploma.<sup>49</sup>

- In North Dakota, only 5 percent of children lived in families not headed by a high school graduate, the lowest percentage in the country. At 25 percent, California had the highest rate.

- More than one-third (36 percent) of Latino children lived in households headed by someone without a high school diploma. That is more than two and a half times the rate for African-American children (14 percent) and six times the rate for non-Hispanic white children (6 percent).

**More than one-third (36 percent) of Latino children lived in households headed by someone without a high school diploma. That is more than two and a half times the rate for African-American children (14 percent) and six times the rate for non-Hispanic white children (6 percent).**

PERCENTAGE OF CHILDREN IN FAMILIES WHERE THE HOUSEHOLD HEAD LACKS A HIGH SCHOOL DIPLOMA BY RACE AND HISPANIC ORIGIN: 2012



SOURCE: U.S. Census Bureau, 2012 American Community Survey.

## Children living in high-poverty areas

Concentrated poverty puts whole neighborhoods at risk. High-poverty neighborhoods are much more likely than others to have high rates of crime and violence, physical and mental health issues, unemployment and other problems. Concentrated neighborhood poverty negatively affects poor children, as well as those who are better off.<sup>50</sup> High-poverty areas are defined here as census tracts where the poverty rates of the total population are 30 percent or more.

- During the period from 2008 through 2012, 13 percent of children lived in high-poverty areas nationwide, a total of 9.4 million children. Between 1990 and 2000, the likelihood that a child would grow up in an area of concentrated poverty declined from 11 percent to 9 percent.<sup>51</sup> The rate increased between 2000 and 2006–2010 and continues to climb.

- Variation among the states was wide: Only 1 percent of children in Alaska and New Hampshire lived in areas of concentrated poverty, while 28 percent of Mississippi's children lived in high-poverty areas.

- African-American, American Indian and Latino children were much more likely to live in high-poverty areas than were children from other racial and ethnic groups. The rates were 30 percent, 28 percent and 23 percent, respectively.

## Teen births

Teenage childbearing can have long-term negative effects for both the mother and newborn. Teens are at higher risk of bearing low-birthweight and preterm babies. And, their babies are far more likely to be born into families with limited educational and economic resources, which function as barriers to future success.<sup>52</sup> Although the teen birth rate is now at a historic low, the teen birth rate in the United States remains the highest among all affluent countries.<sup>53</sup>

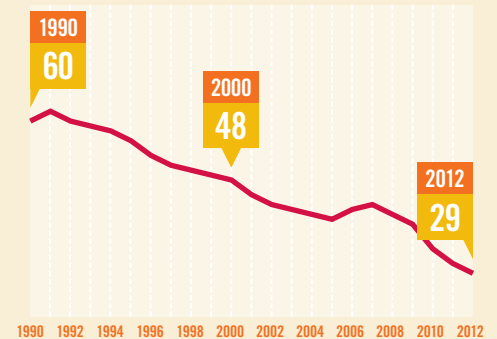
- In 2012, there were more than 305,000 babies born to females ages 15 to 19. That translates into a birth rate of 29 births per 1,000 teens, which is half the rate in 1990, 60 births per 1,000 teens.<sup>54</sup>

- Among the states, the teen birth rate for 2012 ranged from a low of 14 births per 1,000 teens ages 15 to 19 in Massachusetts and New Hampshire, to a high of 47 per 1,000 in New Mexico and Oklahoma.

- At 46 births per 1,000 teenage girls, the teen birth rate for Latinos was the highest across major racial and ethnic groups. Although it remained high, the 2012 rate for births to Latino teens was the lowest rate on record.<sup>55</sup>

In 2012, there were more than 305,000 babies born to females ages 15 to 19. That translates into a birth rate of 29 births per 1,000 teens, which is half the rate in 1990, 60 births per 1,000 teens.

TEEN BIRTHS PER 1,000 FEMALES: 1990–2012



SOURCE Centers for Disease Control and Prevention, National Center for Health Statistics, 1990–2012 Vital Statistics.





# CONCLUSION

**During the past 25 years, there have been a number of positive developments in the well-being of children.**

---

In the area of education, we have seen gradual, incremental improvements for children of all ages: More children are attending prekindergarten; reading and math scores are increasing; and more teenagers are graduating from high school on time. Also, a smaller percentage of children have parents who lack a high school diploma.

There also have been notable gains in child health and safety. Safety regulations and public health campaigns have contributed to lower child death rates and reductions in alcohol and drug use among teenagers. Public health insurance coverage through Medicaid expansions and the implementation of the State Children's Health Insurance Program have reduced the percentage of uninsured kids. In addition, the Affordable Care Act has made health insurance accessible to even more children and their parents, while availability of employer-based insurance continues to decline.

Although the gains in education and health have been sustained in recent years, the recession dealt a heavy blow to family economic security. Even before the recession, child poverty was on the rise. Food assistance and work-related

benefits for low-income families have lifted many children out of poverty and kept many others from falling into poverty. However, the weak labor market for workers without a college degree remains one of the main obstacles to further reducing economic hardship among children and families.

The biggest challenge in an era of increasing inequality in income and wealth is the widening gulf between children growing up in strong, economically secure families within thriving communities and children who are not. Although African-American and Latino children continue to fall disproportionately into the latter group, a greater share of children of all racial and ethnic groups are facing conditions that can impede their long-term success.

If we want to ensure that the next generation is prepared to effectively compete in a global economy that is increasingly technology driven and dependent on a well-educated workforce, then we must act. With the right investments, we can provide all families and children with the opportunity to reach their full potential and, in the process, strengthen both our economy and our nation.

## ENDNOTES

1. The Annie E. Casey Foundation, KIDS COUNT Data Center. *Child population by gender* (Table). Retrieved from <http://datacenter.kidscount.org/data/tables/102-child-population-by-gender?loc=1&loct=2#detailed/2/2-52/true/868,1/65/421,422>
2. The Annie E. Casey Foundation. (2014). *Race for results: Building a path to opportunity for all children* (KIDS COUNT Policy Report). Baltimore, MD: Author. Retrieved from [www.aecf.org/race4results](http://www.aecf.org/race4results)
3. O'Hare, W. P. (2011, November). *The changing child population of the United States: Analysis of data from the 2010 census* (KIDS COUNT Working Paper). Baltimore, MD: The Annie E. Casey Foundation. Retrieved from [www.aecf.org/m/resourcecod/AECF-ChangingChildPopulation-2011-Full.pdf](http://www.aecf.org/m/resourcecod/AECF-ChangingChildPopulation-2011-Full.pdf)
4. Ibid.
5. U.S. Department of Labor, Bureau of Labor Statistics. (2014, April 25). *Employment characteristics of families summary* (Press Release). Retrieved from [www.bls.gov/news.release/famee.nr0.htm](http://www.bls.gov/news.release/famee.nr0.htm). And, Mosisa, A., & Hipple, S. (2006, October). Trends in labor force participation in the United States. *Monthly Labor Review*, 35–57. Retrieved from [www.bls.gov/opub/mlr/2006/10/art3full.pdf](http://www.bls.gov/opub/mlr/2006/10/art3full.pdf)
6. U.S. Department of Labor, Bureau of Labor Statistics. (2011, May 6). *Share of married-couple families with an employed mother at its lowest, 1994–2010* (TED: The Editor's Desk). Washington, DC: Author. Retrieved from [www.bls.gov/opub/ted/2011/ted\\_20110506.htm](http://www.bls.gov/opub/ted/2011/ted_20110506.htm)
7. Mosisa, A., & Hipple, S. (2006, October). Trends in labor force participation in the United States. *Monthly Labor Review*, 35–57. Retrieved from [www.bls.gov/opub/mlr/2006/10/art3full.pdf](http://www.bls.gov/opub/mlr/2006/10/art3full.pdf)
8. The Annie E. Casey Foundation, KIDS COUNT Data Center. *Births to unmarried women* (Table). Retrieved from <http://datacenter.kidscount.org/data/tables/7-births-to-unmarried-women?loc=1&loct=1#detailed/1/any/false/868,867,133,38,35/any/257,258>
9. Child Trends Databank. (2013, July). *Births to unmarried women*. Bethesda, MD: Author. Retrieved from [www.childtrends.org/?indicators=births-to-unmarried-women](http://www.childtrends.org/?indicators=births-to-unmarried-women)
10. Nichols, A. (2013, September). *Explaining changes in child poverty over the past four decades* (Low-Income Working Families Discussion Paper 2). Washington, DC: The Urban Institute. Retrieved from [www.urban.org/UploadedPDF/412897-Explaining-Changes-in-Child-Poverty-Over-the-Past-Four-Decades.pdf](http://www.urban.org/UploadedPDF/412897-Explaining-Changes-in-Child-Poverty-Over-the-Past-Four-Decades.pdf)
11. In 2011, 5.4 per 1,000 children in the United States were in foster care, compared with 6.2 per 1,000 in 1990. Child Trends Databank. (2012, August). *Foster care*. Bethesda, MD: Author. Retrieved from [www.childtrends.org/?indicators=foster-care](http://www.childtrends.org/?indicators=foster-care)
12. The Annie E. Casey Foundation. (2012). *Stepping up for kids: What government and communities should do to support kinship families* (KIDS COUNT Policy Report). Baltimore, MD: Author. Retrieved from [www.aecf.org/resources/stepping-up-for-kids/](http://www.aecf.org/resources/stepping-up-for-kids/)
13. The youth incarceration rate declined from 356 per 100,000 youth in 1997 to 196 per 100,000 in 2011. The Annie E. Casey Foundation, KIDS COUNT Data Center. *Youth residing in juvenile detention, correctional and/or residential facilities* (Table). Retrieved from <http://datacenter.kidscount.org/data/tables/42-youth-residing-in-juvenile-detention-correctional-and-or-residential-facilities?loc=1&loct=2#detailed/1/any/false/867,8/any/319,320>
14. Federal Interagency Forum on Child and Family Statistics. (2013). *America's children: Key national indicators of well-being, 2013*. Washington, DC: U.S. Government Printing Office. Retrieved from [www.childstats.gov/americaschildren/ecola.asp](http://www.childstats.gov/americaschildren/ecola.asp)
15. Population Reference Bureau's analysis of U.S. Census Bureau data from the 1990 and 2000 Current Population Survey, Annual Social and Economic Supplement (ASEC). *Poverty status of people, by age, race and Hispanic origin: 1959 to 2012* (Table 3). Retrieved from [www.census.gov/hhes/www/poverty/data/historical/people.html](http://www.census.gov/hhes/www/poverty/data/historical/people.html)
16. Fox, L., Garfinkel, I., Kaushal, N., Waldfogel, J., & Wimer, C. (2014, January). *Waging war on poverty: Historical trends in poverty using the supplemental poverty measure* (NBER Working Paper No. 19789). Cambridge, MA: National Bureau of Economic Research. Retrieved from [www.nber.org/papers/w19789.pdf](http://www.nber.org/papers/w19789.pdf)
17. Barnett, W. S., & Carolan, M. E. (2013, June). *Trends in state-funded preschool programs: Survey findings from 2001–2002 and 2011–2012*. New Brunswick, NJ: Center on Enhancing Early Learning Outcomes, National Institute for Early Education Research, Rutgers, The State University of New Jersey. Retrieved from [http://nieer.org/sites/nieer/files/Trends%20in%20State%20Funded%20Preschool%20Programs\\_0.pdf](http://nieer.org/sites/nieer/files/Trends%20in%20State%20Funded%20Preschool%20Programs_0.pdf)
18. For example, an evaluation of Oklahoma's prekindergarten program showed that third graders who attended preschool scored higher in math, but not in reading; the effect held only for boys. Hill, C. J., Gormley, Jr., W. T., & Adelstein, S. (2012, May 24). *Do the short-term effects of a strong preschool program persist?* New York, NY: Foundation for Child Development. Retrieved from <http://fcd-us.org/resources/do-short-term-effects-strong-preschool-program-persist#node-1213>
19. The three states that dropped the Common Core standards are Indiana, Oklahoma and South Carolina. Alaska, Nebraska, Texas and Virginia have not adopted the Common Core. Layton, L. (2014, June 7). How Bill Gates pulled off the swift Common Core revolution. *The Washington Post*. Retrieved from [www.washingtonpost.com/politics/how-bill-gates-pulled-off-the-swift-common-core-revolution/2014/06/07/a830e32e-ec34-11e3-9f5c-9075d5508f0a\\_story.html](http://www.washingtonpost.com/politics/how-bill-gates-pulled-off-the-swift-common-core-revolution/2014/06/07/a830e32e-ec34-11e3-9f5c-9075d5508f0a_story.html)
20. Reardon, S. F. (2011). The widening academic achievement gap between the rich and the poor: New evidence and possible explanations. In R. Murnane & G. Duncan (Eds.), *Whither opportunity? Rising inequality and the uncertain life chances of low-income children*. New York, NY: Russell Sage Foundation Press. Retrieved from <http://cepa.stanford.edu/content/widening-academic-achievement-gap-between-rich-and-poor-new-evidence-and-possible-thash>. AfzUv2Aj.dpuf
21. Rothstein, R. (2010, October 14). *How to fix our schools* (Issue Brief No. 286). Washington, DC: Economic Policy Institute. Retrieved from [www.epi.org/publication/ib286/](http://www.epi.org/publication/ib286/)
22. See, for example, Dubow, E. F., Boxer, P., & Huesmann, L. R. (2009, July). Long-term effects of parents' education on children's educational and occupational success: Mediation by family interactions, child aggression, and teenage aspirations. *Merrill-Palmer Quarterly*, 55(3), 224–249. Retrieved from [www.ncbi.nlm.nih.gov/pmc/articles/PMC2853053/](http://www.ncbi.nlm.nih.gov/pmc/articles/PMC2853053/)
23. U.S. Department of Labor, Bureau of Labor Statistics. (2014, June 23). *Databases, tables and calculators by subject: Labor force statistics from the Current Population Survey, unemployment rates* (Table). Retrieved from <http://data.bls.gov/timeseries/LNS14000000>
24. The Annie E. Casey Foundation. (2014). *Race for Results: Building a path to opportunity for all children* (KIDS COUNT Policy Report). Baltimore, MD: Author. Retrieved from [www.aecf.org/race4results](http://www.aecf.org/race4results)
25. *Tax credits for working families, Illinois profile*. Retrieved from [www.taxcreditsforworkingfamilies.org/state/illinois/](http://www.taxcreditsforworkingfamilies.org/state/illinois/)
26. Voices for Illinois Children, Fiscal Policy Center. *EITC works! Lifting working families, boosting local economies*. Retrieved from <http://eitcworks.org/docs/EITC%20Statewide%20Factsheet.pdf>

27. Yeung, W. J., Linver, M. R., & Brooks-Gunn, J. (2002, November). How money matters for young children's development: Parental investment and family processes. *Child Development*, 73(6), 1861–1879.
28. For a summary of this literature, see Gershoff, E. T., Aber, J. L., & Raver, C. C. (2003). Child poverty in the U.S.: An evidence-based conceptual framework for programs and policies. In R. Lerner, F. Jacobs, & D. Wertlieb (Eds.), *Promoting positive child, adolescent, and family development: A handbook of program and policy innovations* (pp. 81–136). Thousand Oaks, CA: Sage Publications.
29. Ibid.
30. Population Reference Bureau's analysis of data from the U.S. Census Bureau, Current Population Survey, Basic Monthly Survey microdata.
31. Barnett, W. S., Jung, K., Youn, M.-J., & Frede, E. C. (2013, March 20). *Abbott preschool program longitudinal effects study: Fifth grade follow-up*. New Brunswick, NJ: National Institute for Early Education Research, Rutgers, The State University of New Jersey. Retrieved from <http://nieer.org/sites/nieer/files/APPLES%205th%20Grade.pdf>
32. Reardon, S. F. (2011). The widening academic achievement gap between the rich and the poor: New evidence and possible explanations. In R. Murnane & G. Duncan (Eds.), *Whither opportunity? Rising inequality and the uncertain life chances of low-income children*. New York, NY: Russell Sage Foundation Press. Retrieved from <http://cepa.stanford.edu/content/widening-academic-achievement-gap-between-rich-and-poor-new-evidence-and-possible-sthsh>. AfzUv2Aj.dpuf
33. Higgins, L. B., Stagman, S., & Smith, S. (2010, September). *Improving supports for parents of young children: State-level initiatives*. New York, NY: National Center for Children in Poverty, Mailman School of Public Health, Columbia University. Retrieved from [http://nccp.org/publications/pdf/text\\_966.pdf](http://nccp.org/publications/pdf/text_966.pdf). And, Gormley, Jr., W., Gayer, T., Phillips, D., & Dawson, B. (2004, November). *The effects of Oklahoma's universal pre-kindergarten program on school readiness: An executive summary*. Washington, DC: Center for Research on Children in the United States, Georgetown University. Retrieved from <https://georgetown.app.box.com/s/hxy0bp4dr3xrjyqbimi>
34. The Annie E. Casey Foundation. (2010, January 1). *Early warning! Why reading by the end of third grade matters* (KIDS COUNT Special Report). Baltimore, MD: Author. Retrieved from [www.aecf.org/resources/early-warning-why-reading-by-the-end-of-third-grade-matters/](http://www.aecf.org/resources/early-warning-why-reading-by-the-end-of-third-grade-matters/)
35. U.S. Department of Education, Institute of Education Sciences, National Center for Education Statistics. National Assessment of Educational Progress (NAEP) Reading Assessment.
36. Child Trends Databank. (2013, February). *Mathematics proficiency*. Bethesda, MD: Author. Retrieved May 2014, from [www.childtrends.org/?indicators=mathematics-proficiency](http://www.childtrends.org/?indicators=mathematics-proficiency)
37. Alliance for Excellent Education. (2011, November 1). *The high cost of high school dropouts: What the nation pays for inadequate high schools*. Washington, DC: Author. Retrieved from [www.all4ed.org/files/HighCost.pdf](http://www.all4ed.org/files/HighCost.pdf)
38. U.S. Census Bureau. (2013, September 19). *The 2012 American Community Survey 1-year estimates* (Summary Table S2001). Retrieved May 2014, from [http://factfinder2.census.gov/faces/tableservices/jsf/pages/productview.xhtml?pid=ACS\\_12\\_1YR\\_S2001&prodType=table](http://factfinder2.census.gov/faces/tableservices/jsf/pages/productview.xhtml?pid=ACS_12_1YR_S2001&prodType=table)
39. Alliance for Excellent Education. (2006, November 1). *Healthier and wealthier: Decreasing health care costs by increasing educational attainment* (Issue Brief). Washington, DC: Author. Retrieved from <http://all4ed.org/reports-factsheets/healthier-and-wealthier-decreasing-health-care-costs-by-increasing-educational-attainment/>
40. Strong, A. (2014, April). *Crossing into new territory: Kids' health coverage in 2014*. Little Rock, AR: Arkansas Advocates for Children and Families. Retrieved from [www.aradvocates.org/assets/PDFs/Health/Finish-Line-Report-2014-Web.pdf](http://www.aradvocates.org/assets/PDFs/Health/Finish-Line-Report-2014-Web.pdf)
41. Shore, R., & Shore, B. (2009, July). *Preventing low birthweight* (KIDS COUNT Indicator Brief). Baltimore, MD: The Annie E. Casey Foundation.
42. Population Reference Bureau's analysis of data from the Centers for Disease Control and Prevention, National Center for Health Statistics, 1990 to 2011 Vital Statistics, Public use data file.
43. Population Reference Bureau's analysis of data from the Centers for Disease Control and Prevention, National Center for Health Statistics, Mortality Data File 2010. Retrieved from [http://webappa.cdc.gov/sasweb/ncipc/leadcaus10\\_us.html](http://webappa.cdc.gov/sasweb/ncipc/leadcaus10_us.html)
44. Ibid.
45. Boonstra, H. D. (2010, Spring). Winning campaign: California's concerted effort to reduce its teen pregnancy rate. *Guttmacher Policy Review*, 13(2). Retrieved from [www.guttmacher.org/pubs/gpr/13/2/gpr130218.html](http://www.guttmacher.org/pubs/gpr/13/2/gpr130218.html)
46. Amato, P. R. (2005, Fall). The impact of family formation change on the cognitive, social, and emotional well-being of the next generation. *The Future of Children*, 15(2), 75–96.
47. Population Reference Bureau's analysis of data from the U.S. Census Bureau, 1990 Census of Population and Housing, Public Use Microdata Samples; Census 2000 Supplementary Survey 1-year microdata file; 2001 Supplementary Survey 1-year microdata file; and 2002–2012 American Community Survey.
48. Child Trends Databank. (2013, May). *Parental education*. Bethesda, MD: Author. Retrieved May 2014, from [www.childtrends.org/?indicators=parental+education](http://www.childtrends.org/?indicators=parental+education)
49. Population Reference Bureau's analysis of data from the U.S. Census Bureau, 1990 Census of Population and Housing, Public Use Microdata Samples; Census 2000 Supplementary Survey 1-year microdata file; 2001 Supplementary Survey 1-year microdata file; and 2002–2012 American Community Survey.
50. The Annie E. Casey Foundation. (2012, February 1). *Children living in America's high-poverty communities* (KIDS COUNT Data Snapshot on High-Poverty Communities). Baltimore, MD: Author. Retrieved from [www.aecf.org/resources/data-snapshot-on-high-poverty-communities/](http://www.aecf.org/resources/data-snapshot-on-high-poverty-communities/)
51. Population Reference Bureau's analysis of data from the U.S. Census Bureau, 1990 and 2000 Census of Population and Housing, Summary files; 2006–10 through 2008–12 American Community Survey 5-year microdata files.
52. Child Trends Databank. (2013, July). *Teen births*. Bethesda, MD: Author. Retrieved May 2014, from [www.childtrends.org/?indicators=teen+births](http://www.childtrends.org/?indicators=teen+births)
53. Adamson, P. (2013, April). *Child well-being in rich countries: A comparative overview* (Innocenti Report Card 11). Florence, IT: UNICEF Office of Research. Retrieved from [www.unicef-irc.org/publications/pdf/rc11\\_eng.pdf](http://www.unicef-irc.org/publications/pdf/rc11_eng.pdf)
54. Population Reference Bureau's analysis of data from the Centers for Disease Control and Prevention, National Center for Health Statistics, 1990–2011 Vital Statistics, Public use data file.
55. Martin, J. A., Hamilton, B. E., Ventura, S. J., Osterman, M. J. K., Wilson, E. C., & Mathews, T. J. (2012, August 28). Births: Final data for 2010. *National Vital Statistics Reports*, 61(1), Table A. Retrieved May 2014, from [www.cdc.gov/nchs/data/nvsr/nvsr61/nvsr61\\_01.pdf](http://www.cdc.gov/nchs/data/nvsr/nvsr61/nvsr61_01.pdf)

# KIDS COUNT DATA CENTER

Access Data on Child Well-Being  
Through the KIDS COUNT Data Center

The Annie E. Casey Foundation's KIDS COUNT Data Center provides access to hundreds of child well-being indicators related to education, employment and income, health, poverty and youth risk factors. Data are available for the nation and for states, as well as for cities, counties and congressional districts. Site features include powerful search options; attractive and easy to create tables, maps and graphs; and ways to share information through social media on how children are faring.

[datacenter.kidscount.org](http://datacenter.kidscount.org)

## Mobile Site

---

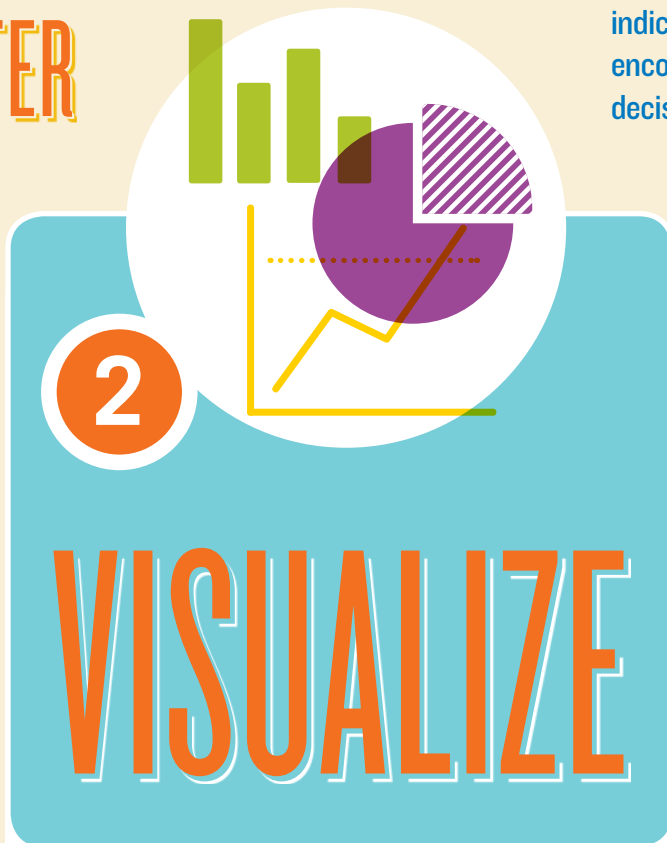
All indicators currently found on the KIDS COUNT Data Center can be accessed quickly and easily anytime, anywhere on your mobile device at: [mobile.kidscount.org](http://mobile.kidscount.org)

# KIDS COUNT DATA CENTER

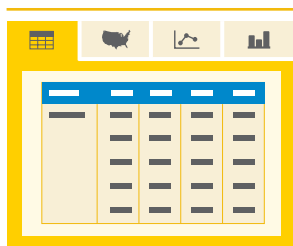
Hundreds of child well-being indicators at your fingertips to encourage policies and support smart decisions for children and families.



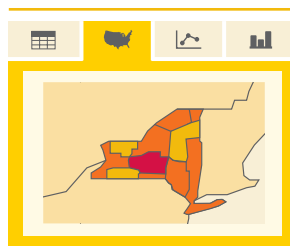
Enter any location, topic or keyword into the powerful search engine to find the statistics most relevant to your community.



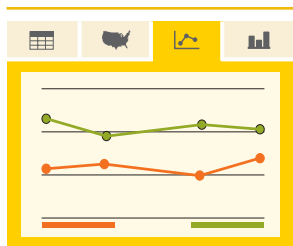
Create custom profiles



Create maps



Create line graphs



Create bar charts



Post data visualizations on Facebook, add custom graphics to Tumblr and tweet about how the well-being of your state's children compares with the region and nation.

# APPENDICES



## Child Well-Being Rankings

|                      | Overall Rank | Economic Well-Being Rank | Education Rank | Health Rank | Family and Community Rank |
|----------------------|--------------|--------------------------|----------------|-------------|---------------------------|
| State                |              |                          |                |             |                           |
| Alabama              | 44           | 39                       | 45             | 36          | 42                        |
| Alaska               | 33           | 31                       | 42             | 46          | 15                        |
| Arizona              | 46           | 46                       | 44             | 44          | 46                        |
| Arkansas             | 41           | 42                       | 36             | 34          | 45                        |
| California           | 40           | 48                       | 39             | 26          | 43                        |
| Colorado             | 22           | 18                       | 11             | 39          | 21                        |
| Connecticut          | 7            | 15                       | 5              | 8           | 9                         |
| Delaware             | 23           | 23                       | 23             | 16          | 26                        |
| District of Columbia | N.R.         | N.R.                     | N.R.           | N.R.        | N.R.                      |
| Florida              | 38           | 45                       | 27             | 37          | 35                        |
| Georgia              | 42           | 44                       | 40             | 38          | 39                        |
| Hawaii               | 25           | 33                       | 31             | 22          | 13                        |
| Idaho                | 21           | 20                       | 33             | 20          | 11                        |
| Illinois             | 20           | 21                       | 17             | 12          | 28                        |
| Indiana              | 27           | 19                       | 26             | 27          | 31                        |
| Iowa                 | 3            | 3                        | 13             | 1           | 7                         |
| Kansas               | 15           | 7                        | 12             | 21          | 25                        |
| Kentucky             | 35           | 35                       | 30             | 28          | 40                        |
| Louisiana            | 47           | 43                       | 47             | 42          | 48                        |
| Maine                | 14           | 29                       | 14             | 3           | 6                         |
| Maryland             | 12           | 14                       | 8              | 14          | 19                        |
| Massachusetts        | 1            | 13                       | 1              | 2           | 8                         |
| Michigan             | 32           | 34                       | 38             | 29          | 29                        |
| Minnesota            | 5            | 4                        | 6              | 17          | 5                         |
| Mississippi          | 50           | 50                       | 48             | 48          | 50                        |
| Missouri             | 29           | 24                       | 22             | 30          | 27                        |
| Montana              | 31           | 25                       | 21             | 50          | 14                        |
| Nebraska             | 10           | 5                        | 9              | 24          | 20                        |
| Nevada               | 48           | 47                       | 50             | 47          | 44                        |
| New Hampshire        | 4            | 12                       | 4              | 13          | 1                         |
| New Jersey           | 8            | 16                       | 2              | 19          | 10                        |
| New Mexico           | 49           | 49                       | 49             | 49          | 49                        |
| New York             | 28           | 37                       | 18             | 5           | 34                        |
| North Carolina       | 34           | 38                       | 28             | 32          | 36                        |
| North Dakota         | 6            | 1                        | 19             | 23          | 4                         |
| Ohio                 | 24           | 22                       | 16             | 18          | 30                        |
| Oklahoma             | 39           | 30                       | 41             | 41          | 38                        |
| Oregon               | 30           | 40                       | 35             | 7           | 22                        |
| Pennsylvania         | 16           | 17                       | 7              | 25          | 23                        |
| Puerto Rico          | N.R.         | N.R.                     | N.R.           | N.R.        | N.R.                      |
| Rhode Island         | 26           | 26                       | 25             | 15          | 32                        |
| South Carolina       | 45           | 41                       | 43             | 43          | 41                        |
| South Dakota         | 17           | 2                        | 32             | 33          | 24                        |
| Tennessee            | 36           | 36                       | 37             | 31          | 37                        |
| Texas                | 43           | 32                       | 34             | 40          | 47                        |
| Utah                 | 11           | 10                       | 29             | 4           | 2                         |
| Vermont              | 2            | 8                        | 3              | 6           | 3                         |
| Virginia             | 9            | 11                       | 10             | 11          | 12                        |
| Washington           | 18           | 27                       | 20             | 9           | 17                        |
| West Virginia        | 37           | 28                       | 46             | 35          | 33                        |
| Wisconsin            | 13           | 9                        | 15             | 10          | 18                        |
| Wyoming              | 19           | 6                        | 24             | 45          | 16                        |

N.R. Not Ranked.



APPENDIX 2: DATA FOR 16 INDICATORS OF CHILD WELL-BEING

ECONOMIC WELL-BEING INDICATORS

| State                | Children in poverty: 2012 |         | Children whose parents lack secure employment: 2012 |         | Children living in households with a high housing cost burden: 2012 |         | Teens not in school and not working: 2012 |         |
|----------------------|---------------------------|---------|---|---------|---|---------|---|---------|
|                      | Number                    | Percent | Number  | Percent | Number  | Percent | Number                                    | Percent |
| United States        | 16,397,000                | 23      | 23,101,000  | 31      | 27,761,000  | 38      | 1,404,000                                 | 8       |
| Alabama              | 306,000                   | 27      | 394,000   | 35      | 355,000   | 32      | 27,000                                    | 10      |
| Alaska               | 26,000                    | 14      | 68,000  | 36      | 64,000  | 34      | 4,000                                     | 10      |
| Arizona              | 429,000                   | 27      | 556,000   | 34      | 618,000   | 38      | 38,000                                    | 11      |
| Arkansas             | 200,000                   | 29      | 236,000   | 33      | 215,000   | 30      | 17,000                                    | 11      |
| California           | 2,167,000                 | 24      | 3,228,000   | 35      | 4,706,000   | 51      | 175,000                                   | 8       |
| Colorado             | 224,000                   | 18      | 344,000   | 28      | 441,000   | 36      | 21,000                                    | 8       |
| Connecticut          | 117,000                   | 15      | 223,000   | 28      | 325,000   | 41      | 11,000                                    | 5       |
| Delaware             | 35,000                    | 17      | 65,000  | 32      | 76,000  | 37      | 4,000                                     | 8       |
| District of Columbia | 29,000                    | 27      | 43,000  | 39      | 46,000  | 42      | 3,000                                     | 10      |
| Florida              | 1,001,000                 | 25      | 1,356,000   | 34      | 1,825,000   | 46      | 87,000                                    | 9       |
| Georgia              | 672,000                   | 27      | 828,000   | 33      | 953,000   | 38      | 62,000                                    | 11      |
| Hawaii               | 51,000                    | 17      | 88,000  | 29      | 139,000   | 46      | 6,000                                     | 9       |
| Idaho                | 87,000                    | 21      | 120,000   | 28      | 136,000   | 32      | 8,000                                     | 9       |
| Illinois             | 624,000                   | 21      | 901,000   | 29      | 1,160,000   | 38      | 50,000                                    | 7       |
| Indiana              | 350,000                   | 22      | 474,000   | 30      | 450,000   | 28      | 28,000                                    | 8       |
| Iowa                 | 113,000                   | 16      | 167,000   | 23      | 168,000   | 23      | 9,000                                     | 5       |
| Kansas               | 135,000                   | 19      | 176,000   | 24      | 198,000   | 27      | 11,000                                    | 7       |
| Kentucky             | 264,000                   | 27      | 357,000   | 35      | 292,000   | 29      | 21,000                                    | 9       |
| Louisiana            | 310,000                   | 28      | 400,000   | 36      | 363,000   | 32      | 28,000                                    | 11      |
| Maine                | 54,000                    | 21      | 88,000  | 33      | 96,000  | 36      | 5,000                                     | 8       |
| Maryland             | 183,000                   | 14      | 352,000   | 26      | 502,000   | 37      | 24,000                                    | 8       |
| Massachusetts        | 213,000                   | 15      | 414,000   | 30      | 507,000   | 36      | 20,000                                    | 5       |
| Michigan             | 554,000                   | 25      | 778,000   | 34      | 768,000   | 34      | 43,000                                    | 8       |
| Minnesota            | 184,000                   | 15      | 312,000   | 24      | 369,000   | 29      | 14,000                                    | 5       |
| Mississippi          | 256,000                   | 35      | 301,000   | 40      | 265,000   | 35      | 23,000                                    | 12      |
| Missouri             | 310,000                   | 23      | 433,000   | 31      | 432,000   | 31      | 28,000                                    | 8       |
| Montana              | 44,000                    | 20      | 67,000  | 30      | 68,000  | 31      | 5,000                                     | 10      |
| Nebraska             | 81,000                    | 18      | 104,000   | 22      | 122,000   | 26      | 6,000                                     | 6       |
| Nevada               | 157,000                   | 24      | 226,000   | 34      | 296,000   | 45      | 14,000                                    | 10      |
| New Hampshire        | 42,000                    | 16      | 72,000  | 26      | 106,000   | 39      | 4,000                                     | 6       |
| New Jersey           | 310,000                   | 15      | 534,000   | 26      | 920,000   | 45      | 29,000                                    | 6       |
| New Mexico           | 149,000                   | 29      | 185,000   | 36      | 168,000   | 33      | 15,000                                    | 12      |
| New York             | 959,000                   | 23      | 1,353,000   | 32      | 1,923,000   | 45      | 83,000                                    | 8       |
| North Carolina       | 586,000                   | 26      | 751,000   | 33      | 781,000   | 34      | 50,000                                    | 9       |
| North Dakota         | 20,000                    | 13      | 30,000  | 19      | 25,000  | 16      | 2,000                                     | 5       |
| Ohio                 | 621,000                   | 24      | 856,000   | 32      | 825,000   | 31      | 42,000                                    | 7       |
| Oklahoma             | 222,000                   | 24      | 281,000   | 30      | 274,000   | 29      | 21,000                                    | 10      |
| Oregon               | 195,000                   | 23      | 295,000   | 34      | 351,000   | 41      | 19,000                                    | 9       |
| Pennsylvania         | 532,000                   | 20      | 832,000   | 30      | 897,000   | 33      | 49,000                                    | 7       |
| Puerto Rico          | 475,000                   | 56      | 440,000   | 52      | 267,000   | 31      | 35,000                                    | 15      |
| Rhode Island         | 42,000                    | 19      | 72,000  | 33      | 87,000  | 40      | 4,000                                     | 6       |
| South Carolina       | 288,000                   | 27      | 384,000   | 36      | 345,000   | 32      | 27,000                                    | 10      |
| South Dakota         | 35,000                    | 17      | 49,000  | 24      | 44,000  | 21      | 2,000                                     | 4       |
| Tennessee            | 379,000                   | 26      | 496,000   | 33      | 501,000   | 34      | 31,000                                    | 9       |
| Texas                | 1,777,000                 | 26      | 2,087,000   | 30      | 2,405,000   | 34      | 129,000                                   | 9       |
| Utah                 | 132,000                   | 15      | 206,000   | 23      | 302,000   | 34      | 14,000                                    | 8       |
| Vermont              | 19,000                    | 15      | 35,000  | 28      | 45,000  | 36      | 1,000                                     | 4       |
| Virginia             | 279,000                   | 15      | 465,000   | 25      | 657,000   | 35      | 31,000                                    | 7       |
| Washington           | 288,000                   | 19      | 492,000   | 31      | 617,000   | 39      | 29,000                                    | 8       |
| West Virginia        | 92,000                    | 25      | 132,000   | 34      | 91,000  | 24      | 8,000                                     | 9       |
| Wisconsin            | 235,000                   | 18      | 362,000   | 28      | 407,000   | 31      | 18,000                                    | 6       |
| Wyoming              | 22,000                    | 17      | 35,000  | 25      | 37,000  | 27      | 2,000                                     | 7       |





EDUCATION INDICATORS

| State                | Children not attending preschool: 2010-12 |         | Fourth graders not proficient in reading: 2013 |         | Eighth graders not proficient in math: 2013 |         | High school students not graduating on time: 2011/12 |         |
|----------------------|---|---------|--|---------|---|---------|--|---------|
|                      | Number                                    | Percent | Number   | Percent | Number                                      | Percent | Number   | Percent |
| United States        | 4,307,000                                 | 54      | N.A.   | 66      | N.A.  | 66      | N.A.   | 19      |
| Alabama              | 71,000                                    | 59      | N.A.   | 69      | N.A.  | 80      | N.A.   | 25      |
| Alaska               | 13,000                                    | 64      | N.A.   | 73      | N.A.  | 67      | N.A.   | 21      |
| Arizona              | 120,000                                   | 67      | N.A.   | 72      | N.A.  | 69      | N.A.   | 23      |
| Arkansas             | 42,000                                    | 53      | N.A.   | 68      | N.A.  | 72      | N.A.   | 22      |
| California           | 530,000                                   | 53      | N.A.   | 73      | N.A.  | 72      | N.A.   | 18      |
| Colorado             | 71,000                                    | 51      | N.A.   | 59      | N.A.  | 58      | N.A.   | 18      |
| Connecticut          | 30,000                                    | 37      | N.A.   | 57      | N.A.  | 63      | N.A.   | 14      |
| Delaware             | 11,000                                    | 50      | N.A.   | 62      | N.A.  | 67      | N.A.   | 23      |
| District of Columbia | 3,000                                     | 27      | N.A.   | 77      | N.A.  | 81      | N.A.   | 29      |
| Florida              | 220,000                                   | 51      | N.A.   | 61      | N.A.  | 69      | N.A.   | 25      |
| Georgia              | 141,000                                   | 52      | N.A.   | 66      | N.A.  | 71      | N.A.   | 30      |
| Hawaii               | 17,000                                    | 49      | N.A.   | 70      | N.A.  | 68      | N.A.   | 22      |
| Idaho                | 31,000                                    | 65      | N.A.   | 67      | N.A.  | 64      | N.A.   | 16      |
| Illinois             | 155,000                                   | 47      | N.A.   | 66      | N.A.  | 64      | N.A.   | 18      |
| Indiana              | 105,000                                   | 60      | N.A.   | 62      | N.A.  | 62      | N.A.   | 20      |
| Iowa                 | 42,000                                    | 53      | N.A.   | 62      | N.A.  | 64      | N.A.   | 11      |
| Kansas               | 44,000                                    | 54      | N.A.   | 62      | N.A.  | 60      | N.A.   | 11      |
| Kentucky             | 67,000                                    | 58      | N.A.   | 64      | N.A.  | 70      | N.A.   | 18      |
| Louisiana            | 63,000                                    | 50      | N.A.   | 77      | N.A.  | 79      | N.A.   | 28      |
| Maine                | 16,000                                    | 56      | N.A.   | 63      | N.A.  | 60      | N.A.   | 13      |
| Maryland             | 73,000                                    | 50      | N.A.   | 55      | N.A.  | 63      | N.A.   | 16      |
| Massachusetts        | 62,000                                    | 42      | N.A.   | 53      | N.A.  | 45      | N.A.   | 14      |
| Michigan             | 124,000                                   | 54      | N.A.   | 69      | N.A.  | 70      | N.A.   | 23      |
| Minnesota            | 76,000                                    | 54      | N.A.   | 59      | N.A.  | 53      | N.A.   | 12      |
| Mississippi          | 42,000                                    | 50      | N.A.   | 79      | N.A.  | 79      | N.A.   | 32      |
| Missouri             | 86,000                                    | 56      | N.A.   | 65      | N.A.  | 67      | N.A.   | 14      |
| Montana              | 15,000                                    | 60      | N.A.   | 65      | N.A.  | 60      | N.A.   | 14      |
| Nebraska             | 27,000                                    | 52      | N.A.   | 63      | N.A.  | 64      | N.A.   | 7       |
| Nevada               | 53,000                                    | 70      | N.A.   | 73      | N.A.  | 72      | N.A.   | 40      |
| New Hampshire        | 13,000                                    | 48      | N.A.   | 55      | N.A.  | 53      | N.A.   | 13      |
| New Jersey           | 82,000                                    | 38      | N.A.   | 58      | N.A.  | 51      | N.A.   | 13      |
| New Mexico           | 36,000                                    | 62      | N.A.   | 79      | N.A.  | 77      | N.A.   | 26      |
| New York             | 195,000                                   | 44      | N.A.   | 63      | N.A.  | 68      | N.A.   | 22      |
| North Carolina       | 147,000                                   | 59      | N.A.   | 65      | N.A.  | 64      | N.A.   | 21      |
| North Dakota         | 11,000                                    | 64      | N.A.   | 66      | N.A.  | 59      | N.A.   | 9       |
| Ohio                 | 161,000                                   | 56      | N.A.   | 63      | N.A.  | 60      | N.A.   | 16      |
| Oklahoma             | 59,000                                    | 58      | N.A.   | 70      | N.A.  | 75      | N.A.   | 21      |
| Oregon               | 57,000                                    | 60      | N.A.   | 67      | N.A.  | 66      | N.A.   | 22      |
| Pennsylvania         | 150,000                                   | 51      | N.A.   | 60      | N.A.  | 58      | N.A.   | 12      |
| Puerto Rico          | 39,000                                    | 45      | N.A.   | N.A.    | N.A.  | N.A.    | N.A.   | 38      |
| Rhode Island         | 12,000                                    | 53      | N.A.   | 62      | N.A.  | 64      | N.A.   | 24      |
| South Carolina       | 67,000                                    | 57      | N.A.   | 72      | N.A.  | 69      | N.A.   | 28      |
| South Dakota         | 15,000                                    | 62      | N.A.   | 68      | N.A.  | 62      | N.A.   | 17      |
| Tennessee            | 99,000                                    | 61      | N.A.   | 66      | N.A.  | 72      | N.A.   | 17      |
| Texas                | 458,000                                   | 59      | N.A.   | 72      | N.A.  | 62      | N.A.   | 18      |
| Utah                 | 63,000                                    | 60      | N.A.   | 63      | N.A.  | 64      | N.A.   | 22      |
| Vermont              | 7,000                                     | 51      | N.A.   | 58      | N.A.  | 53      | N.A.   | 7       |
| Virginia             | 106,000                                   | 52      | N.A.   | 57      | N.A.  | 62      | N.A.   | 16      |
| Washington           | 103,000                                   | 59      | N.A.   | 60      | N.A.  | 58      | N.A.   | 21      |
| West Virginia        | 27,000                                    | 65      | N.A.   | 73      | N.A.  | 76      | N.A.   | 20      |
| Wisconsin            | 81,000                                    | 60      | N.A.   | 65      | N.A.  | 60      | N.A.   | 8       |
| Wyoming              | 9,000                                     | 58      | N.A.   | 63      | N.A.  | 62      | N.A.   | 20      |

N.A. Not Available.



APPENDIX 2: DATA FOR 16 INDICATORS OF CHILD WELL-BEING

HEALTH INDICATORS

| State                | Low-birthweight babies: 2012 |         | Children without health insurance: 2012 |         | Child and teen deaths per 100,000: 2010 |      | Teens who abuse alcohol or drugs: 2011-12 |         |
|----------------------|------------------------------|---------|---|---------|---|------|---|---------|
|                      | Number                       | Percent | Number                                  | Percent | Number                                  | Rate | Number                                    | Percent |
| United States        | 315,709                      | 8.0     | 5,264,000                               | 7       | 20,482                                  | 26   | 1,618,000                                 | 6       |
| Alabama              | 5,853                        | 10.0    | 46,000                                  | 4       | 445                                     | 37   | 22,000                                    | 6       |
| Alaska               | 632                          | 5.7     | 26,000                                  | 14      | 84                                      | 43   | 4,000                                     | 7       |
| Arizona              | 5,997                        | 6.9     | 214,000                                 | 13      | 477                                     | 28   | 40,000                                    | 8       |
| Arkansas             | 3,332                        | 8.7     | 42,000                                  | 6       | 259                                     | 34   | 14,000                                    | 6       |
| California           | 33,655                       | 6.7     | 730,000                                 | 8       | 2,129                                   | 21   | 237,000                                   | 8       |
| Colorado             | 5,749                        | 8.8     | 109,000                                 | 9       | 322                                     | 25   | 29,000                                    | 7       |
| Connecticut          | 2,868                        | 7.9     | 30,000                                  | 4       | 149                                     | 17   | 20,000                                    | 7       |
| Delaware             | 913                          | 8.3     | 7,000                                   | 4       | 52                                      | 23   | 4,000                                     | 6       |
| District of Columbia | 903                          | 9.6     | 2,000                                   | 2       | 48                                      | 41   | 2,000                                     | 7       |
| Florida              | 18,260                       | 8.6     | 436,000                                 | 11      | 1,166                                   | 27   | 82,000                                    | 6       |
| Georgia              | 12,014                       | 9.3     | 220,000                                 | 9       | 792                                     | 30   | 49,000                                    | 6       |
| Hawaii               | 1,542                        | 8.1     | 10,000                                  | 3       | 67                                      | 21   | 7,000                                     | 8       |
| Idaho                | 1,477                        | 6.4     | 36,000                                  | 8       | 127                                     | 28   | 9,000                                     | 6       |
| Illinois             | 12,935                       | 8.1     | 101,000                                 | 3       | 887                                     | 27   | 62,000                                    | 6       |
| Indiana              | 6,555                        | 7.9     | 134,000                                 | 8       | 485                                     | 28   | 32,000                                    | 6       |
| Iowa                 | 2,579                        | 6.7     | 29,000                                  | 4       | 184                                     | 24   | 13,000                                    | 6       |
| Kansas               | 2,879                        | 7.1     | 48,000                                  | 7       | 253                                     | 33   | 14,000                                    | 6       |
| Kentucky             | 4,823                        | 8.7     | 56,000                                  | 6       | 354                                     | 32   | 20,000                                    | 6       |
| Louisiana            | 6,740                        | 10.8    | 59,000                                  | 5       | 444                                     | 37   | 21,000                                    | 6       |
| Maine                | 850                          | 6.6     | 12,000                                  | 5       | 80                                      | 27   | 6,000                                     | 6       |
| Maryland             | 6,417                        | 8.8     | 51,000                                  | 4       | 342                                     | 24   | 26,000                                    | 6       |
| Massachusetts        | 5,478                        | 7.6     | 20,000                                  | 1       | 258                                     | 17   | 35,000                                    | 7       |
| Michigan             | 9,548                        | 8.4     | 90,000                                  | 4       | 687                                     | 27   | 57,000                                    | 7       |
| Minnesota            | 4,550                        | 6.6     | 68,000                                  | 5       | 342                                     | 25   | 29,000                                    | 7       |
| Mississippi          | 4,502                        | 11.6    | 55,000                                  | 7       | 306                                     | 38   | 14,000                                    | 6       |
| Missouri             | 5,809                        | 7.7     | 98,000                                  | 7       | 474                                     | 31   | 30,000                                    | 6       |
| Montana              | 891                          | 7.4     | 24,000                                  | 11      | 108                                     | 45   | 6,000                                     | 9       |
| Nebraska             | 1,734                        | 6.7     | 28,000                                  | 6       | 130                                     | 27   | 10,000                                    | 7       |
| Nevada               | 2,781                        | 8.0     | 110,000                                 | 17      | 189                                     | 27   | 15,000                                    | 7       |
| New Hampshire        | 898                          | 7.3     | 11,000                                  | 4       | 63                                      | 20   | 7,000                                     | 7       |
| New Jersey           | 8,534                        | 8.2     | 103,000                                 | 5       | 394                                     | 18   | 49,000                                    | 7       |
| New Mexico           | 2,381                        | 8.8     | 41,000                                  | 8       | 200                                     | 36   | 16,000                                    | 9       |
| New York             | 19,074                       | 7.9     | 168,000                                 | 4       | 959                                     | 21   | 88,000                                    | 6       |
| North Carolina       | 10,563                       | 8.8     | 173,000                                 | 8       | 666                                     | 27   | 46,000                                    | 6       |
| North Dakota         | 625                          | 6.2     | 11,000                                  | 7       | 55                                      | 34   | 3,000                                     | 6       |
| Ohio                 | 11,857                       | 8.6     | 141,000                                 | 5       | 741                                     | 25   | 53,000                                    | 6       |
| Oklahoma             | 4,200                        | 8.0     | 94,000                                  | 10      | 352                                     | 36   | 19,000                                    | 6       |
| Oregon               | 2,769                        | 6.1     | 55,000                                  | 6       | 199                                     | 21   | 20,000                                    | 7       |
| Pennsylvania         | 11,492                       | 8.1     | 139,000                                 | 5       | 774                                     | 25   | 64,000                                    | 7       |
| Puerto Rico          | 4,501                        | 11.6    | 35,000                                  | 4       | 247                                     | 25   | N.A.                                      | N.A.    |
| Rhode Island         | 877                          | 8.0     | 10,000                                  | 5       | 43                                      | 17   | 5,000                                     | 7       |
| South Carolina       | 5,456                        | 9.6     | 89,000                                  | 8       | 368                                     | 32   | 24,000                                    | 7       |
| South Dakota         | 748                          | 6.2     | 12,000                                  | 6       | 84                                      | 39   | 4,000                                     | 7       |
| Tennessee            | 7,377                        | 9.2     | 85,000                                  | 6       | 490                                     | 31   | 29,000                                    | 6       |
| Texas                | 31,607                       | 8.3     | 863,000                                 | 12      | 1,881                                   | 26   | 151,000                                   | 7       |
| Utah                 | 3,522                        | 6.8     | 90,000                                  | 10      | 218                                     | 24   | 12,000                                    | 5       |
| Vermont              | 370                          | 6.2     | 3,000                                   | 3       | 26                                      | 18   | 4,000                                     | 8       |
| Virginia             | 8,375                        | 8.1     | 104,000                                 | 6       | 438                                     | 22   | 35,000                                    | 6       |
| Washington           | 5,347                        | 6.1     | 91,000                                  | 6       | 355                                     | 21   | 37,000                                    | 7       |
| West Virginia        | 1,917                        | 9.2     | 15,000                                  | 4       | 139                                     | 33   | 8,000                                     | 6       |
| Wisconsin            | 4,809                        | 7.1     | 62,000                                  | 5       | 351                                     | 24   | 28,000                                    | 6       |
| Wyoming              | 645                          | 8.5     | 13,000                                  | 9       | 46                                      | 32   | 3,000                                     | 7       |

N.A. Not Available.



## FAMILY AND COMMUNITY INDICATORS

| State                | Children in single-parent families: 2012 |         | Children in families where the household head lacks a high school diploma: 2012 |         | Children living in high-poverty areas: 2008-12 |         | Teen births per 1,000: 2012 |      |
|----------------------|--|---------|---|---------|--|---------|-----------------------------|------|
|                      | Number                                   | Percent | Number  | Percent | Number   | Percent | Number                      | Rate |
| United States        | 24,725,000                               | 35      | 10,887,000  | 15      | 9,362,000                                      | 13      | 305,388                     | 29   |
| Alabama              | 418,000                                  | 39      | 155,000   | 14      | 171,000  | 15      | 6,195                       | 39   |
| Alaska               | 59,000                                   | 33      | 12,000  | 7       | 2,000  | 1       | 817                         | 35   |
| Arizona              | 581,000                                  | 38      | 303,000   | 19      | 354,000  | 22      | 8,119                       | 37   |
| Arkansas             | 250,000                                  | 37      | 109,000   | 15      | 119,000  | 17      | 4,349                       | 46   |
| California           | 3,023,000                                | 34      | 2,270,000   | 25      | 1,350,000                                      | 15      | 34,890                      | 26   |
| Colorado             | 356,000                                  | 30      | 154,000   | 13      | 107,000  | 9       | 4,154                       | 25   |
| Connecticut          | 251,000                                  | 33      | 62,000  | 8       | 72,000   | 9       | 1,889                       | 15   |
| Delaware             | 75,000                                   | 39      | 26,000  | 13      | 8,000  | 4       | 761                         | 25   |
| District of Columbia | 56,000                                   | 55      | 14,000  | 13      | 32,000   | 31      | 791                         | 39   |
| Florida              | 1,515,000                                | 40      | 513,000   | 13      | 496,000  | 12      | 15,952                      | 28   |
| Georgia              | 925,000                                  | 39      | 378,000   | 15      | 355,000  | 14      | 11,488                      | 34   |
| Hawaii               | 90,000                                   | 31      | 23,000  | 8       | 18,000   | 6       | 1,108                       | 28   |
| Idaho                | 111,000                                  | 27      | 44,000  | 10      | 20,000   | 5       | 1,568                       | 28   |
| Illinois             | 993,000                                  | 34      | 414,000   | 14      | 347,000  | 11      | 12,098                      | 28   |
| Indiana              | 519,000                                  | 34      | 204,000   | 13      | 182,000  | 11      | 7,370                       | 33   |
| Iowa                 | 207,000                                  | 30      | 58,000  | 8       | 28,000   | 4       | 2,498                       | 24   |
| Kansas               | 215,000                                  | 31      | 85,000  | 12      | 56,000   | 8       | 3,306                       | 34   |
| Kentucky             | 349,000                                  | 37      | 128,000   | 13      | 159,000  | 16      | 5,689                       | 42   |
| Louisiana            | 501,000                                  | 48      | 175,000   | 16      | 199,000  | 18      | 6,458                       | 43   |
| Maine                | 85,000                                   | 34      | 19,000  | 7       | 9,000  | 3       | 798                         | 19   |
| Maryland             | 459,000                                  | 36      | 136,000   | 10      | 51,000   | 4       | 4,286                       | 22   |
| Massachusetts        | 435,000                                  | 32      | 120,000   | 9       | 114,000  | 8       | 3,220                       | 14   |
| Michigan             | 763,000                                  | 35      | 233,000   | 10      | 370,000  | 16      | 8,913                       | 26   |
| Minnesota            | 354,000                                  | 29      | 105,000   | 8       | 75,000   | 6       | 3,295                       | 19   |
| Mississippi          | 337,000                                  | 49      | 105,000   | 14      | 207,000  | 28      | 4,781                       | 46   |
| Missouri             | 469,000                                  | 35      | 148,000   | 11      | 136,000  | 10      | 6,317                       | 32   |
| Montana              | 61,000                                   | 30      | 18,000  | 8       | 16,000   | 7       | 892                         | 29   |
| Nebraska             | 131,000                                  | 30      | 53,000  | 11      | 31,000   | 7       | 1,671                       | 27   |
| Nevada               | 246,000                                  | 39      | 134,000   | 20      | 76,000   | 11      | 2,863                       | 33   |
| New Hampshire        | 80,000                                   | 30      | 17,000  | 6       | 3,000  | 1       | 629                         | 14   |
| New Jersey           | 596,000                                  | 30      | 210,000   | 10      | 151,000  | 7       | 4,772                       | 17   |
| New Mexico           | 213,000                                  | 44      | 90,000  | 17      | 112,000  | 22      | 3,275                       | 47   |
| New York             | 1,487,000                                | 36      | 670,000   | 16      | 713,000  | 17      | 12,592                      | 20   |
| North Carolina       | 812,000                                  | 37      | 331,000   | 14      | 279,000  | 12      | 10,077                      | 32   |
| North Dakota         | 41,000                                   | 28      | 7,000   | 5       | 11,000   | 7       | 603                         | 26   |
| Ohio                 | 923,000                                  | 37      | 262,000   | 10      | 376,000  | 14      | 11,437                      | 30   |
| Oklahoma             | 311,000                                  | 35      | 125,000   | 13      | 114,000  | 12      | 5,844                       | 47   |
| Oregon               | 271,000                                  | 33      | 113,000   | 13      | 60,000   | 7       | 2,851                       | 24   |
| Pennsylvania         | 904,000                                  | 35      | 268,000   | 10      | 311,000  | 11      | 10,049                      | 24   |
| Puerto Rico          | 460,000                                  | 57      | 146,000   | 17      | 748,000  | 83      | 6,456                       | 49   |
| Rhode Island         | 83,000                                   | 40      | 29,000  | 13      | 29,000   | 13      | 760                         | 20   |
| South Carolina       | 437,000                                  | 43      | 139,000   | 13      | 148,000  | 14      | 5,537                       | 37   |
| South Dakota         | 65,000                                   | 34      | 16,000  | 8       | 21,000   | 11      | 929                         | 33   |
| Tennessee            | 518,000                                  | 37      | 182,000   | 12      | 215,000  | 14      | 7,910                       | 39   |
| Texas                | 2,356,000                                | 36      | 1,590,000   | 23      | 1,283,000                                      | 19      | 40,451                      | 44   |
| Utah                 | 172,000                                  | 20      | 90,000  | 10      | 38,000   | 4       | 2,494                       | 23   |
| Vermont              | 38,000                                   | 32      | 8,000   | 6       | 2,000  | 2       | 361                         | 16   |
| Virginia             | 553,000                                  | 31      | 169,000   | 9       | 97,000   | 5       | 6,076                       | 23   |
| Washington           | 459,000                                  | 30      | 192,000   | 12      | 89,000   | 6       | 5,017                       | 23   |
| West Virginia        | 125,000                                  | 35      | 41,000  | 11      | 30,000   | 8       | 2,407                       | 44   |
| Wisconsin            | 405,000                                  | 32      | 128,000   | 10      | 116,000  | 9       | 4,159                       | 22   |
| Wyoming              | 41,000                                   | 32      | 10,000  | 7       | 4,000  | 3       | 622                         | 35   |

## About the Index

The KIDS COUNT index reflects child health and education outcomes as well as risk and protective factors, such as economic well-being, family structure and community context. The index incorporates a developmental perspective on childhood and includes experiences across life stages, from birth through early adulthood. The indicators are consistently and regularly measured, which allows for legitimate comparisons across states and over time.

Organizing the index into domains provides a more nuanced assessment of child well-being in each state that can inform policy solutions by helping policymakers and advocates better identify areas of strength and weakness. For example, a state may rank well above average in overall child well-being, while showing the need for improvement in education. Domain-specific data can strengthen decision-making efforts by providing multiple data points relevant to specific policy areas.

The 16 indicators of child well-being are derived from federal government statistical agencies and reflect the best available state and national data for tracking yearly changes. Many of the indicators are derived from samples, and like all sample data, they contain some random error. Other measures (such as the child and teen death rate) are based on relatively small numbers of events in some states and may exhibit some random fluctuation from year to year.

We urge readers to focus on relatively large differences across states, as small differences may simply reflect small fluctuations, rather than real changes in the well-being of children. Assessing trends by looking at changes over a longer period of time is more reliable. State data for past years are available at the KIDS COUNT Data Center ([datacenter.kidscount.org](http://datacenter.kidscount.org)).

The *KIDS COUNT Data Book* utilizes rates and percentages because that is the best way to compare states to one another and to assess changes over time within a state. However, our focus on rates and percentages may mask the magnitude of some of the problems examined in this report. Therefore, data on the actual number of children or events are provided in Appendix 2 and at the KIDS COUNT Data Center.

We include data for the District of Columbia and some data for Puerto Rico in the appendices of the *Data Book*, but not in our state rankings. Because they are significantly different from any state, the comparisons are not instructive. It is more useful to look at changes for these geographies over time or to compare the District with other large cities. Data for many child well-being indicators for the 50 largest cities (including the District of Columbia) are available at the Data Center, which also contains some data for children and families in the U.S. Virgin Islands.

## Definitions and Data Sources

**Domain Rank** for each state was obtained in the following manner. First, we converted the state numerical values for the most recent year for each of the four key indicators within each domain into standard scores. We summed those standard scores in each domain to get a total standard score for each state. Finally, we ranked the states on the basis of their total standard score by domain in sequential order from highest/best (1) to lowest/worst (50). Standard scores were derived by subtracting the mean score from the observed score and dividing the amount by the standard deviation for that distribution of scores. All measures were given the same weight in calculating the domain standard score.

**Overall Rank** for each state was obtained in the following manner. First, we converted the state numerical values for the most recent year for each of the 16 key indicators into standard scores. We summed those standard scores within their domains to create a domain standard score for each of the 50 states. We then summed the four domain standard scores to get a total standard score for each state. Finally, we ranked the states on the basis of their total standard score in sequential order from highest/best (1) to lowest/worst (50). Standard scores were derived by subtracting the mean score from the observed score and dividing the amount by the standard deviation for that distribution of scores. All measures were given the same weight in calculating the total standard score.

**Percent Change Over Time Analysis** was computed by comparing the most recent year's data for 16 key indicators with the data for the

base year. To calculate percent change, we subtracted the rate for the most recent year from the rate for the base year and then divided that quantity by the rate for the base year. The results are multiplied by 100 for readability. The percent change was calculated on rounded data, and the "percent change" figure has been rounded to the nearest whole number.

### Economic Well-Being Indicators

**Children in poverty** is the percentage of children under age 18 who live in families with incomes below 100 percent of the U.S. poverty threshold, as issued each year by the U.S. Census Bureau. In calendar year 2012, a family of two adults and two children fell in the "poverty" category if their annual income fell below \$23,283. Poverty status is not determined for people living in group quarters, such as military barracks, prisons and other institutional quarters, or for unrelated individuals under age 15 (such as foster children). The data are based on income received in the 12 months prior to the survey. **SOURCE:** U.S. Census Bureau, American Community Survey.

**Children whose parents lack secure employment** is the share of all children under age 18 living in families where no parent has regular, full-time, year-round employment. For children living in single-parent families, this means that the resident parent did not work at least 35 hours per week, at least 50 weeks in the 12 months prior to the survey. For children living in married-couple families, this means that neither parent worked at least 35 hours per week, at least 50 weeks in the 12 months prior to the survey. Children living with neither parent are also listed as not having secure parental employment because those

## Definitions and Data Sources

children are likely to be economically vulnerable. The 2012 estimate for this measure should not be compared with estimates prior to 2008 because of substantial changes made to the 2008 American Community Survey questions on labor force participation and number of weeks worked. **SOURCE:** U.S. Census Bureau, American Community Survey.

**Children living in households with a high housing cost burden** is the percentage of children under age 18 who live in households where more than 30 percent of monthly household pretax income is spent on housing-related expenses, including rent, mortgage payments, taxes and insurance. **SOURCE:** U.S. Census Bureau, American Community Survey.

**Teens not in school and not working** is the percentage of teenagers between ages 16 and 19 who are not enrolled in school (full or part time) and not employed (full or part time). This measure is sometimes referred to as “idle teens” or “disconnected youth.” The 2012 estimate for this measure should not be compared with estimates prior to 2008 because of substantial changes made to the 2008 American Community Survey questions on labor force participation and number of weeks worked. **SOURCE:** U.S. Census Bureau, American Community Survey.

### Education Indicators

**Children not attending preschool** is the percentage of children ages 3 and 4 who were not enrolled in nursery school or preschool during the previous two months. Children enrolled in kindergarten are excluded from this analysis. Due to small sample size, the three-year

American Community Survey was used to increase accuracy of the estimates. **SOURCE:** U.S. Census Bureau, American Community Survey.

**Fourth graders not proficient in reading** is the percentage of fourth-grade public school students who did not reach the proficient level in reading as measured by the National Assessment of Educational Progress (NAEP). Public schools include charter schools and exclude Bureau of Indian Education schools and Department of Defense Education Activity schools. **SOURCE:** U.S. Department of Education, National Center for Education Statistics, National Assessment of Educational Progress.

**Eighth graders not proficient in math** is the percentage of eighth-grade public school students who did not reach the proficient level in math as measured by the National Assessment of Educational Progress (NAEP). Public schools include charter schools and exclude Bureau of Indian Education schools and Department of Defense Education Activity schools. **SOURCE:** U.S. Department of Education, National Center for Education Statistics, National Assessment of Educational Progress.

**High school students not graduating on time** is the estimated percentage of an entering freshman class not graduating in four years. The measure is derived from the Averaged Freshman Graduation Rate (AFGR), which uses aggregate student enrollment data to estimate the size of an incoming freshman class and aggregate counts of the number of regular diplomas awarded four years later. Estimates are based on preliminary data. **SOURCE:** U.S. Department of Education, National Center for Education Statistics, Common Core of Data (CCD).

## Health Indicators

**Low-birthweight babies** is the percentage of live births weighing less than 2,500 grams (5.5 pounds). The data reflect the mother's place of residence, not the place where the birth occurred. **SOURCE:** Centers for Disease Control and Prevention, National Center for Health Statistics, Vital Statistics.

**Children without health insurance** is the percentage of children under age 18 not covered by any health insurance. The data are based on health insurance coverage at the time of the survey; interviews are conducted throughout the calendar year. **SOURCE:** U.S. Census Bureau, American Community Survey.

**Child and teen deaths** is the number of deaths, from all causes, to children between ages 1 and 19 per 100,000 children in this age range. The data are reported by the place of residence, not the place where the death occurred. **SOURCES:** **Death Statistics:** Centers for Disease Control and Prevention, National Center for Health Statistics, Vital Statistics. **Population Statistics:** U.S. Census Bureau, Population Estimates.

**Teens who abuse alcohol or drugs** is the percentage of teens ages 12 to 17 reporting dependence on or abuse of either illicit drugs or alcohol in the past year. Illicit drugs include marijuana, cocaine, heroin, hallucinogens, inhalants or prescription drugs used nonmedically. These data are based on a two-year average of survey responses. **SOURCE:** Substance Abuse and Mental Health Services Administration, National Survey on Drug Use and Health.

## Family and Community Indicators

**Children in single-parent families** is the percentage of children under age 18 who live with their own unmarried parent, either in a family or sub-family. In this definition, single-parent families may include cohabiting couples. Children living with married stepparents are not considered to be in a single-parent family. **SOURCE:** U.S. Census Bureau, American Community Survey.

**Children in families where the household head lacks a high school diploma** is the percentage of children under age 18 living in households where the household head does not have a high school diploma or equivalent. **SOURCE:** U.S. Census Bureau, American Community Survey.

**Children living in high-poverty areas** is the percentage of children under age 18 who live in census tracts where the poverty rates of the total population are 30 percent or more. In calendar year 2012, a family of two adults and two children fell in the "poverty" category if their annual income fell below \$23,283. The data are based on income received in the 12 months prior to the survey. The census tract level data used in this analysis are only available in the five-year American Community Survey. **SOURCE:** U.S. Census Bureau, American Community Survey.

**Teen births** is the number of births to teenagers between ages 15 and 19 per 1,000 females in this age group. Data reflect the mother's place of residence, rather than the place of the birth. **SOURCES:** **Birth Statistics:** Centers for Disease Control and Prevention, National Center for Health Statistics, Vital Statistics. **Population Statistics:** U.S. Census Bureau, Population Estimates.

## Primary Contacts for State KIDS COUNT Projects

The Annie E. Casey Foundation provides funding and technical assistance for a national network of KIDS COUNT projects in every state, the District of Columbia, the U.S. Virgin Islands and the Commonwealth of Puerto Rico. These projects, listed on the following pages, measure and report on the status of children at the state and local levels. They use the data to inform public debates and encourage public action to improve the lives of children.

The state KIDS COUNT projects publish a range of data-driven materials — state data books, special reports, issue briefs and fact sheets — that help policymakers and citizens identify the needs of children and families and develop appropriate responses to address these needs. Much of the local-level data collected by the state KIDS COUNT grantees are available at: [datacenter.kidscount.org](http://datacenter.kidscount.org)

### State Grantees

---

For more information about the network of state KIDS COUNT grantees, including mailing addresses, please visit: [www.kidscount.org](http://www.kidscount.org)



### Alabama

VOICES for Alabama's Children  
www.alavoices.org  
334.213.2410

### Alaska

KIDS COUNT Alaska  
kidscount.alaska.edu  
907.786.5431

### Arizona

Children's Action Alliance  
www.azchildren.org  
602.266.0707

### Arkansas

Arkansas Advocates  
for Children & Families  
www.aradvocates.org  
501.371.9678

### California

Children Now  
www.childrennow.org  
510.763.2444

### Colorado

Colorado Children's Campaign  
www.coloradokids.org  
303.839.1580

### Connecticut

Connecticut Association  
for Human Services  
www.caahs.org  
860.951.2212

### Delaware

University of Delaware  
www.dekidscount.org  
302.831.3462

### District of Columbia

DC Action for Children  
www.dckids.org  
202.234.9404

### Florida

Florida KIDS COUNT  
University of South Florida  
www.floridakidscount.org  
813.974.7411

### Georgia

Georgia Family Connection  
Partnership, Inc.  
www.gafcp.org  
404.527.7394

### Hawaii

University of Hawaii  
Center on the Family  
www.uhfamily.hawaii.edu  
808.956.3760

### Idaho

Mountain States Group  
www.idahokidscount.org  
208.388.1014

### Illinois

Voices for Illinois Children  
www.voices4kids.org  
312.456.0600

### Indiana

Indiana Youth Institute  
www.iyi.org  
317.396.2700

### Iowa

Child & Family Policy Center  
www.cfpciowa.org  
515.280.9027

### Kansas

Kansas Action for Children  
www.kac.org  
785.232.0550

### Kentucky

Kentucky Youth Advocates, Inc.  
www.kyyouth.org  
502.895.8167

### Louisiana

Agenda for Children  
www.agendaforchildren.org  
504.586.8509

### Maine

Maine Children's Alliance  
www.mekids.org  
207.623.1868

### Maryland

Advocates for Children & Youth  
www.acy.org  
410.547.9200

### Massachusetts

Massachusetts Budget  
& Policy Center  
www.massbudget.org  
617.426.1228

### Michigan

Michigan League for Public Policy  
www.mlpp.org  
517.487.5436

### Minnesota

Children's Defense  
Fund — Minnesota  
www.cdf-mn.org  
651.227.6121

### Mississippi

Social Science Research Center  
kidscount.ssrc.msstate.edu  
662.325.7127

### Missouri

Family and Community Trust  
www.mofact.org  
573.526.3581

### Montana

Montana KIDS COUNT  
The University of Montana  
www.montanakidscount.org  
406.243.5113

## Primary Contacts for State KIDS COUNT Projects

### Nebraska

Voices for Children in Nebraska  
[www.voicesforchildren.com](http://www.voicesforchildren.com)  
402.597.3100

### Nevada

Center for Business  
and Economic Research  
<http://kidscount.unlv.edu>  
702.895.3191

### New Hampshire

New Hampshire KIDS COUNT  
[www.nhkidscount.org](http://www.nhkidscount.org)  
603.225.2264

### New Jersey

Advocates for Children  
of New Jersey  
[www.acnj.org](http://www.acnj.org)  
973.643.3876

### New Mexico

New Mexico Voices for Children  
[www.nmvoices.org](http://www.nmvoices.org)  
505.244.9505

### New York

New York State Council  
on Children & Families  
[www.ccf.ny.gov](http://www.ccf.ny.gov)  
518.473.3652

### North Carolina

NC Child  
[www.ncchild.org](http://www.ncchild.org)  
919.834.6623

### North Dakota

North Dakota State University  
[www.ndkidscount.org](http://www.ndkidscount.org)  
701.231.5931

### Ohio

Children's Defense Fund — Ohio  
[www.cdfohio.org](http://www.cdfohio.org)  
614.221.2244

### Oklahoma

Oklahoma Institute  
for Child Advocacy  
[www.oica.org](http://www.oica.org)  
405.236.5437

### Oregon

Children First for Oregon  
[www.cffo.org](http://www.cffo.org)  
503.236.9754

### Pennsylvania

Pennsylvania Partnerships  
for Children  
[www.papartnerships.org](http://www.papartnerships.org)  
717.236.5680

### Puerto Rico

Youth Development Institute  
of Puerto Rico (Instituto para  
el Desarrollo de la Juventud)  
<http://juventudpr.org/en>  
787.728.3939

### Rhode Island

Rhode Island KIDS COUNT  
[www.rikidscount.org](http://www.rikidscount.org)  
401.351.9400

### South Carolina

The Children's Trust  
of South Carolina  
[www.scchildren.org](http://www.scchildren.org)  
803.744.4035

### South Dakota

SD KIDS COUNT Project  
[www.usd.edu/sdkidscount](http://www.usd.edu/sdkidscount)  
605.677.6432

### Tennessee

Tennessee Commission  
on Children & Youth  
[www.tn.gov/tccy](http://www.tn.gov/tccy)  
615.741.2633

### Texas

Center for Public Policy Priorities  
[http://forabettertexas.org/  
childwellbeing.html](http://forabettertexas.org/childwellbeing.html)  
512.320.0222

### U.S. Virgin Islands

Community Foundation  
of the Virgin Islands  
[www.cfvi.net](http://www.cfvi.net)  
340.774.6031

### Utah

Voices for Utah Children  
[www.utahchildren.org](http://www.utahchildren.org)  
801.364.1182

### Vermont

Voices for Vermont's Children  
[www.voicesforvtkids.org](http://www.voicesforvtkids.org)  
802.229.6377

### Virginia

Voices for Virginia's Children  
[www.vakids.org](http://www.vakids.org)  
804.649.0184

### Washington

KIDS COUNT in Washington  
[www.kidscountwa.org](http://www.kidscountwa.org)  
206.324.0340

### West Virginia

West Virginia KIDS COUNT Fund  
[www.wvkidscountfund.org](http://www.wvkidscountfund.org)  
304.345.2101

### Wisconsin

Wisconsin Council on  
Children & Families  
[www.wccf.org](http://www.wccf.org)  
608.284.0580

### Wyoming

To Be Determined

## ABOUT THE ANNIE E. CASEY FOUNDATION AND KIDS COUNT

The Annie E. Casey Foundation is a private philanthropy that creates a brighter future for the nation's children by developing solutions to strengthen families, build paths to economic opportunity and transform struggling communities into safer and healthier places to live, work and grow.

KIDS COUNT®, a project of the Annie E. Casey Foundation, is a national and state-by-state effort to track the status of children in the United States. By providing policymakers and citizens with benchmarks of child well-being, KIDS COUNT seeks to enrich local, state and national discussions concerning ways to secure better futures for all children.

At the national level, the initiative develops and distributes reports on key areas of well-being, including the annual *KIDS COUNT Data Book*. The initiative also maintains the KIDS COUNT Data Center ([datacenter.kidscount.org](http://datacenter.kidscount.org)), which uses the best available data to measure the educational, social, economic and physical well-being of children. Additionally, the Foundation funds a nationwide network of state-level KIDS COUNT projects that provide a more detailed, community-by-community picture of the condition of children.

© 2014 The Annie E. Casey Foundation  
701 St. Paul Street  
Baltimore, MD 21202  
[www.aecf.org](http://www.aecf.org)

KIDS COUNT® is a registered trademark of the Annie E. Casey Foundation.

Permission to copy, disseminate or otherwise use information from this *Data Book* is granted as long as appropriate acknowledgment is given.

Printed and bound in the United States of America on recycled paper using soy-based inks.

ISSN 1060-9814

Designed by KINETIK  
[www.kinetikcom.com](http://www.kinetikcom.com)

Photography © Jason Miczek  
and Jennifer Bishop

Data compiled by  
Population Reference Bureau  
[www.prb.org](http://www.prb.org)



701 ST. PAUL STREET  
BALTIMORE, MD 21202  
410.547.8600  
WWW.AECF.ORG



THE ANNIE E. CASEY FOUNDATION